

CNPase antibody

Cat. No. GTX85451

Host	Chicken
Clonality	Polyclonal
Isotype	IgY
Applications	WB, ICC/IF, IHC-Fr, IHC
Reactivity	Human, Mouse, Rat

References (1)

Package

50 µg

Applications

Application Note

*Optimal dilutions/concentrations should be determined by the researcher.

Suggested dilution	Recommended dilution
WB	1:500-1:1000
ICC/IF	Assay dependent
IHC-Fr	Assay dependent
IHC	1:500-1:1000

Not tested in other applications.

Calculated MW 48 kDa. ([Note](#))

Properties

Form	Liquid
Buffer	PBS
Preservative	0.02% Sodium azide
Storage	Store as concentrated solution. Centrifuge briefly prior to opening vial. Store at 4°C.
Concentration	100 µg/ml (Please refer to the vial label for the specific concentration.)
Immunogen	Chickens were immunized with a synthetic peptide / keyhole limpet hemocyanin (KLH) conjugate. The peptide corresponded to a region of the CNPase gene product shared between the human (NP_149124, NCBI) and mouse (P16330, NCBI) sequences.
Purification	Purified by antigen-affinity chromatography
Conjugation	Unconjugated



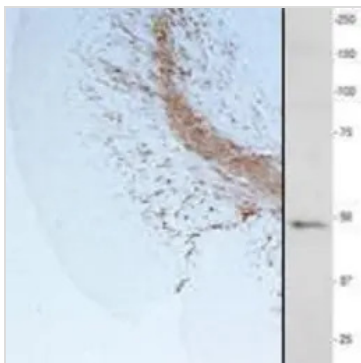
For full product information, images and publications, please visit our [website](#).

For laboratory research use only. Not for any clinical, therapeutic, or diagnostic use in humans or animals. Not for animal or human consumption.

Note

Purchasers shall not, and agree not to enable third parties to, analyze, copy, reverse engineer or otherwise attempt to determine the structure or sequence of the product.

DATA IMAGES



GTx85451 WB Image

IHC/WB analysis of cerebellar white matter using GTx85451 CNPase antibody.



GTx85451 IHC Image

IHC analysis of mouse brain using GTx85451 CNPase antibody. The result shows CNPase (brown staining) in white matter tracts and the granule cell layer of the cerebellum.



For full product information, images and publications, please visit our [website](#).