

Coronin 1A antibody

Cat. No. GTX85452

Host	Chicken
Clonality	Polyclonal
Isotype	IgY
Applications	WB, ICC/IF, IHC
Reactivity	Human, Mouse, Rat

Package
50 µg

Applications

Application Note

*Optimal dilutions/concentrations should be determined by the researcher.

Suggested dilution	Recommended dilution
WB	1:5000-1:10000
ICC/IF	Assay dependent
IHC	1:1000-1:2000

Not tested in other applications.

Calculated MW 51 kDa. ([Note](#))

Properties

Form	Liquid
Buffer	PBS
Preservative	0.02% Sodium azide
Storage	Store as concentrated solution. Centrifuge briefly prior to opening vial. Store at 4°C.
Concentration	100 µg/ml (Please refer to the vial label for the specific concentration.)
Immunogen	Chickens were immunized with a synthetic peptide / keyhole limpet hemocyanin (KLH) conjugate. This synthetic peptide corresponded to a sequence shared between the human (NM_007074) and mouse (NM_009898) gene products.
Purification	Purified by antigen-affinity chromatography
Conjugation	Unconjugated

Note

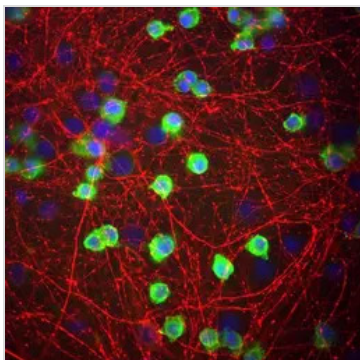
For laboratory research use only. Not for any clinical, therapeutic, or diagnostic use in humans or animals. Not for animal or human consumption.

Purchasers shall not, and agree not to enable third parties to, analyze, copy, reverse engineer or otherwise attempt to determine the structure or sequence of the product.



For full product information, images and publications, please visit our [website](#).

DATA IMAGES

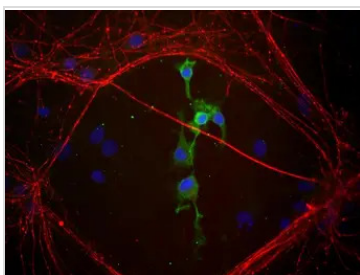


GTx85452 IHC Image

IHC analysis of 4%PFA-fixed mouse cerebral cortical tissue using GTx85452 Coronin 1A antibody.

Green : Primary antibody

Red : Internexin antibody



GTx85452 IHC Image

IHC analysis of 4%PFA-fixed mouse cerebral cortical tissue using GTx85452 Coronin 1A antibody.

Green : Primary antibody

Red : Internexin antibody



For full product information, images and publications, please visit our [website](#).