

# GAD67 antibody

**Cat. No. GTX85453**

<b>Host</b>	Chicken
<b>Clonality</b>	Polyclonal
<b>Isotype</b>	IgY
<b>Applications</b>	WB, ICC/IF, IHC-P, IHC
<b>Reactivity</b>	Human, Mouse, Rat

**Package**  
50 µg

## Applications

### Application Note

\*Optimal dilutions/concentrations should be determined by the researcher.

Suggested dilution	Recommended dilution
WB	1:1000-1:2000
ICC/IF	Assay dependent
IHC-P	Assay dependent
IHC	1:500-1:1000

Not tested in other applications.

**Calculated MW** 67 kDa. ( [Note](#) )

## Properties

<b>Form</b>	Liquid
<b>Buffer</b>	PBS
<b>Preservative</b>	0.02% Sodium azide
<b>Storage</b>	Store as concentrated solution. Centrifuge briefly prior to opening vial. Store at 4°C. DO NOT FREEZE.
<b>Concentration</b>	100 µg/ml (Please refer to the vial label for the specific concentration.)
<b>Immunogen</b>	Chickens were immunized with a synthetic peptide / keyhole limpet hemocyanin (KLH) conjugate. This synthetic peptide corresponded to a region near the C-terminus of this gene product, and was 100% conserved between the human (Q99259, NCBI), mouse (P48318, NCBI) and rat (NP_058703, NCBI) gene products.
<b>Purification</b>	Purified by antigen-affinity chromatography
<b>Conjugation</b>	Unconjugated



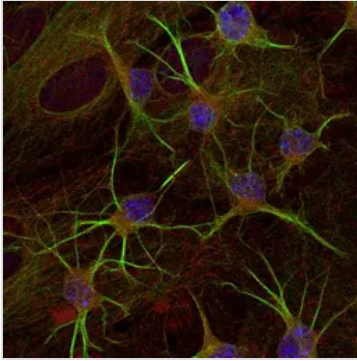
For full product information, images and publications, please visit our [website](#).

For laboratory research use only. Not for any clinical, therapeutic, or diagnostic use in humans or animals. Not for animal or human consumption.

## Note

Purchasers shall not, and agree not to enable third parties to, analyze, copy, reverse engineer or otherwise attempt to determine the structure or sequence of the product.

## DATA IMAGES



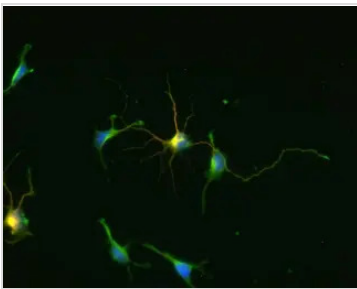
### GTx85453 ICC/IF Image

ICC/IF analysis of Sph21 cells using GTx85453 GAD67 antibody.

Green : Primary antibody

Red : F-actin Blue : DAPI

Fixation : 4% paraformaldehyde

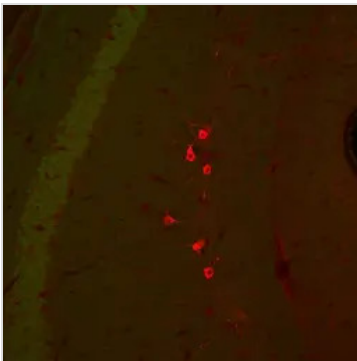


### GTx85453 ICC/IF Image

ICC/IF analysis of cultured cortical neurons using GTx85453 GAD67 antibody.

Red : Primary antibody

Green : MAP2 antibody



### GTx85453 IHC Image

IHC analysis of mouse brain using GTx85453 GAD67 antibody. The green staining is low level GFP fluorescence expressed off the acting promoter in this mouse transgenic strain.

Red : Primary antibody

Fixation : 4.0% paraformaldehyde



For full product information, images and publications, please visit our [website](#).