

MAP2 antibody

Cat. No. GTX85455

Host	Chicken
Clonality	Polyclonal
Isotype	IgY
Applications	WB, ICC/IF, IHC
Reactivity	Human, Mouse, Rat

References (2)

Package

50 µg

Applications

Application Note

*Optimal dilutions/concentrations should be determined by the researcher.

Suggested dilution	Recommended dilution
WB	1:5000-1:10000
ICC/IF	Assay dependent
IHC	1:1000-1:2000

Not tested in other applications.

Calculated MW 200 kDa. ([Note](#))

Properties

Form	Liquid
Buffer	PBS
Preservative	0.02% Sodium azide
Storage	Store as concentrated solution. Centrifuge briefly prior to opening vial. Store at 4°C. DO NOT FREEZE.
Concentration	200 µg/ml (Please refer to the vial label for the specific concentration.)
Immunogen	Chickens were immunized with two synthetic peptide / keyhole limpet hemocyanin (KLH) conjugates. These synthetic peptides corresponded to different regions of the MAP-2 gene product, but are shared between the human (NP_002365, NCBI) and mouse (P20357, NCBI) sequences
Purification	Purified by antigen-affinity chromatography
Conjugation	Unconjugated

Note

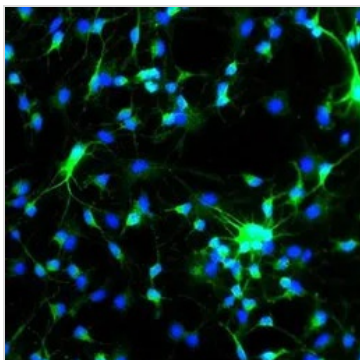
For laboratory research use only. Not for any clinical, therapeutic, or diagnostic use in humans or animals. Not for animal or human consumption.

Purchasers shall not, and agree not to enable third parties to, analyze, copy, reverse engineer or otherwise attempt to determine the structure or sequence of the product.



For full product information, images and publications, please visit our [website](#).

DATA IMAGES

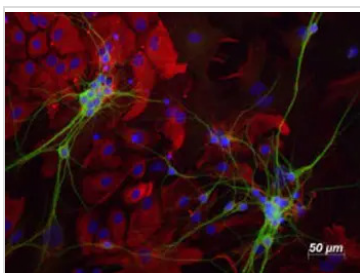


GTX85455 ICC/IF Image

IHC analysis of E18 mouse brain using GTX85455 MAP2 antibody.

Green : Primary antibody

Blue : DAPI



GTX85455 IHC Image

IHC analysis of neonatal mouse brain cortical cultures using GTX85455 MAP2 antibody.

Green : Primary antibody

Red : GFAP antibody

Blue : DAPI



For full product information, images and publications, please visit our [website](#).