

Myelin basic protein antibody

Cat. No. GTX85456

Host	Chicken
Clonality	Polyclonal
Isotype	IgY
Applications	WB, ICC/IF, IHC
Reactivity	Human, Mouse, Rat

Package

50 µg

Applications

Application Note

*Optimal dilutions/concentrations should be determined by the researcher.

Suggested dilution	Recommended dilution
WB	1:1000-1:2000
ICC/IF	Assay dependent
IHC	1:1000-1:2000

Not tested in other applications.

Calculated MW 33 kDa. ([Note](#))

Properties

Form	Liquid
Buffer	PBS
Preservative	0.02% Sodium azide
Storage	Store as concentrated solution. Centrifuge briefly prior to opening vial. Store at 4°C. DO NOT FREEZE.
Concentration	100 µg/ml (Please refer to the vial label for the specific concentration.)
Immunogen	Chickens were immunized with a synthetic peptide / keyhole limpet hemocyanin (KLH) conjugate. The peptide corresponded to a region of the MBP gene product shared between the human (NP_002376, NCBI) and mouse (NP_034907, NCBI) sequences.
Purification	Purified by antigen-affinity chromatography
Conjugation	Unconjugated

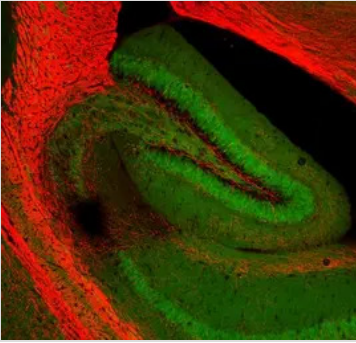
Note

For laboratory research use only. Not for any clinical, therapeutic, or diagnostic use in humans or animals. Not for animal or human consumption.

Purchasers shall not, and agree not to enable third parties to, analyze, copy, reverse engineer or otherwise attempt to determine the structure or sequence of the product.



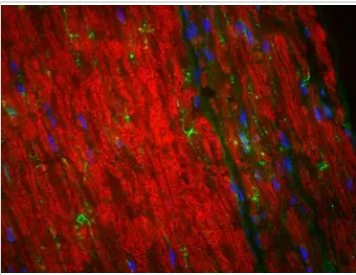
For full product information, images and publications, please visit our [website](#).

DATA IMAGES

GTX85456 IHC Image

IHC analysis of hippocampal region of a transgenic adult mouse brain using GTX85456 Myelin basic protein antibody. This particular transgenic mouse expresses low levels of GFP autofluorescence until control of an actin promoter region.

Red : Primary antibody

Dilution : 1:1000

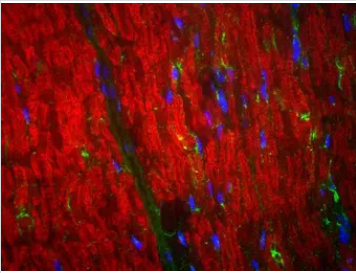

GTX85456 IHC Image

IHC analysis of sciatic nerve of an adult rat using GTX85456 Myelin basic protein antibody.

Green : Primary antibody

Red : ubiquitous gene product

Blue : DAPI


GTX85456 IHC Image

IHC analysis of sciatic nerve of an adult rat using GTX85456 Myelin basic protein antibody.

Green : Primary antibody

Red : ubiquitous gene product

Blue : DAPI



For full product information, images and publications, please visit our [website](#).