

# Nestin antibody

**Cat. No. GTX85457**

<b>Host</b>	Chicken
<b>Clonality</b>	Polyclonal
<b>Isotype</b>	IgY
<b>Applications</b>	WB, ICC/IF, IHC
<b>Reactivity</b>	Mouse

References ( 1 )

Package

50 µg

## Applications

### Application Note

Recommended starting dilutions:

For IHC: Use at 1:3000 - 1:6000.

For ICC/IF: Use at 1:3000 - 1:6000.

For WB: Use at 1:5000 - 1:10000. Not yet tested in other applications. Optimal working dilutions should be determined experimentally by the end user.

<b>Calculated MW</b>	177 kDa. ( <a href="#">Note</a> )
<b>Product Note</b>	Nestin

## Properties

<b>Form</b>	Liquid
<b>Buffer</b>	PBS
<b>Preservative</b>	0.02% Sodium azide
<b>Storage</b>	Store as concentrated solution. Centrifuge briefly prior to opening vial. Store at 4°C.
<b>Concentration</b>	Batch dependent (Please refer to the vial label for the specific concentration.)
<b>Immunogen</b>	Peptides
<b>Purification</b>	Affinity purified antibody
<b>Conjugation</b>	Unconjugated

### Note

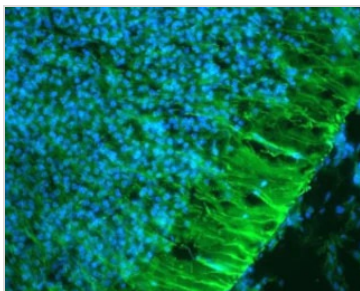
For laboratory research use only. Not for any clinical, therapeutic, or diagnostic use in humans or animals. Not for animal or human consumption.

Purchasers shall not, and agree not to enable third parties to, analyze, copy, reverse engineer or otherwise attempt to determine the structure or sequence of the product.



For full product information, images and publications, please visit our [website](#).

## DATA IMAGES



### GTX85457 IHC Image

IHC analysis of E13.5 mouse brain using Nestin antibody (green) and DAPI (blue).



For full product information, images and publications, please visit our [website](#).