

Netrin 1 antibody

Cat. No. GTX85458

Host	Chicken
Clonality	Polyclonal
Isotype	IgY
Applications	ICC/IF, IHC
Reactivity	Human, Mouse, Rat

Package
50 µg

Applications

Application Note

*Optimal dilutions/concentrations should be determined by the researcher.

Suggested dilution	Recommended dilution
ICC/IF	Assay dependent
IHC	1:1000-1:2000

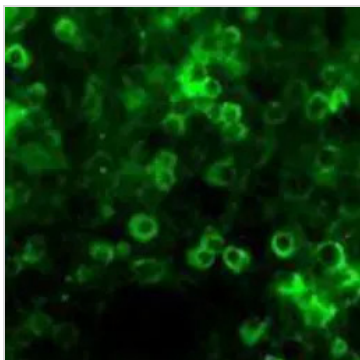
Not tested in other applications.

Properties

Form	Liquid
Buffer	PBS
Preservative	0.02% Sodium azide
Storage	Store as concentrated solution. Centrifuge briefly prior to opening vial. Store at 4°C. DO NOT FREEZE.
Concentration	100 µg/ml (Please refer to the vial label for the specific concentration.)
Immunogen	Chickens were immunized with a synthetic peptide-keyhole limpet hemocyanin (KLH) conjugate. This synthetic peptide corresponded to the netrin-1 gene product, but was shared between the human (O_095631, NCBI) and mouse (O_09118, NCBI) sequences.
Purification	Purified by antigen-affinity chromatography
Conjugation	Unconjugated
Note	For laboratory research use only. Not for any clinical, therapeutic, or diagnostic use in humans or animals. Not for animal or human consumption. Purchasers shall not, and agree not to enable third parties to, analyze, copy, reverse engineer or otherwise attempt to determine the structure or sequence of the product.



For full product information, images and publications, please visit our [website](#).

DATA IMAGES

GTX85458 IHC Image

IHC analysis of Neurosphere (organoid) cultures of e13 mouse brain using GTX85458 Netrin 1 antibody.

Fixation : paraformaldehyde (2%) fixed

Dilution : 1:500



For full product information, images and publications, please visit our [website](#).