

NF-L antibody

Cat. No. GTX85460

Host	Chicken
Clonality	Polyclonal
Isotype	IgY
Applications	WB, ICC/IF, IHC-P, IHC
Reactivity	Human, Mouse, Rat

Package

50 µg

Applications

Application Note

*Optimal dilutions/concentrations should be determined by the researcher.

Suggested dilution	Recommended dilution
WB	1:1000-1:2000
ICC/IF	Assay dependent
IHC-P	Assay dependent
IHC	1:1000-1:2000

Not tested in other applications.

Calculated MW 62 kDa. ([Note](#))

Properties

Form	Liquid
Buffer	PBS, 1% BSA
Preservative	0.02% Sodium azide
Storage	Store as concentrated solution. Centrifuge briefly prior to opening vial. Store at 4°C. DO NOT FREEZE.
Concentration	300 µg/ml (Please refer to the vial label for the specific concentration.)
Immunogen	Chickens were immunized with three synthetic peptide / keyhole limpet hemocyanin (KLH) conjugates. These synthetic peptides corresponded to different regions of the NF-L gene product, but are shared between the human (P07196, NCBI) and mouse (P08551, NCBI) protein sequences.
Purification	Purified by antigen-affinity chromatography
Conjugation	Unconjugated

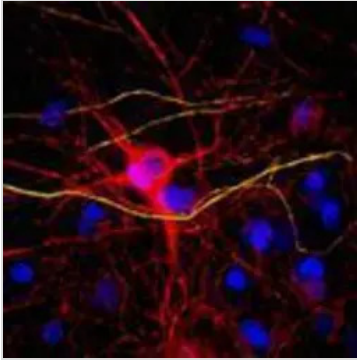


For full product information, images and publications, please visit our [website](#).

For laboratory research use only. Not for any clinical, therapeutic, or diagnostic use in humans or animals. Not for animal or human consumption.

Note

Purchasers shall not, and agree not to enable third parties to, analyze, copy, reverse engineer or otherwise attempt to determine the structure or sequence of the product.

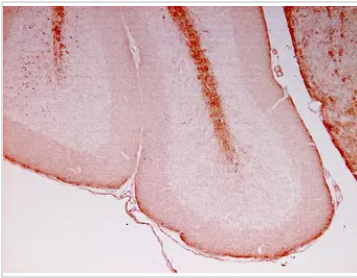
DATA IMAGES

GTx85460 ICC/IF Image

ICC/IF analysis of mouse brain cortical neurons using GTx85460 NF-L antibody.

Red and Yellow : Primary antibody

Blue : DAPI

Dilution : 1:1000


GTx85460 IHC-P Image

IHC-P analysis of mouse cerebellum using GTx85460 NF-L antibody.

Dilution : 1:500



For full product information, images and publications, please visit our [website](#).