

Peripherin antibody

Cat. No. GTX85464

Host	Chicken
Clonality	Polyclonal
Isotype	IgY
Applications	WB, ICC/IF, IHC
Reactivity	Human, Mouse, Rat

Package
50 µg

Applications

Application Note

*Optimal dilutions/concentrations should be determined by the researcher.

Suggested dilution	Recommended dilution
WB	1:2000-1:5000
ICC/IF	Assay dependent
IHC	1:2000-1:5000

Not tested in other applications.

Calculated MW 54 kDa. ([Note](#))

Properties

Form	Liquid
Buffer	PBS
Preservative	0.02% Sodium azide
Storage	Store as concentrated solution. Centrifuge briefly prior to opening vial. Store at 4°C. DO NOT FREEZE.
Concentration	2 mg/ml (Please refer to the vial label for the specific concentration.)
Immunogen	Chickens were immunized with full-length recombinant peripherin protein.
Purification	IgY fraction
Conjugation	Unconjugated

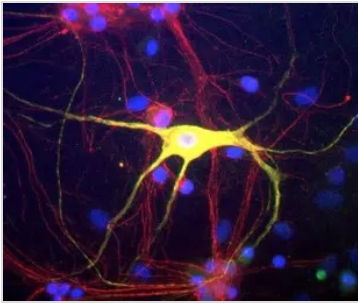
Note

For laboratory research use only. Not for any clinical, therapeutic, or diagnostic use in humans or animals. Not for animal or human consumption.

Purchasers shall not, and agree not to enable third parties to, analyze, copy, reverse engineer or otherwise attempt to determine the structure or sequence of the product.

For full product information, images and publications, please visit our [website](#).

DATA IMAGES



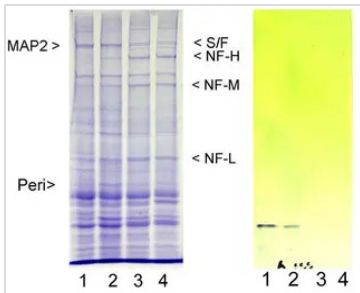
GTX85464 ICC/IF Image

ICC/IF analysis of rat mixed neuron/glia cultures using GTX85464 Peripherin antibody.

Green : Primary antibody

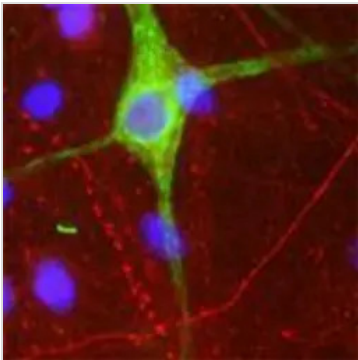
Red : α -interneixin antibody

Blue : DAPI



GTX85464 WB Image

WB analysis of whole protein extracts of adult rat cortex (lane 1), brain stem (lane 2), cerebellum (lane 3), and spinal cord (lane 4) using GTX85464 Peripherin antibody.



GTX85464 ICC/IF Image

ICC/IF analysis of rat mixed neuron/glia cultures using GTX85464 Peripherin antibody.

Green : Primary antibody

Red : α -interneixin antibody

Blue : DAPI



For full product information, images and publications, please visit our [website](https://www.genetex.com).