

Myelin PLP antibody

Cat. No. GTX85465

Host	Chicken
Clonality	Polyclonal
Isotype	IgY
Applications	ICC/IF, IHC
Reactivity	Human, Mouse

Package
50 µg

Applications

Application Note

Recommended starting dilutions: For IHC/IF: Use at 1:1000 - 1:2000. Not yet tested in other applications. Optimal working dilutions should be determined experimentally by the end user.

Product Note proteolipid protein 1

Properties

Form	Liquid
Buffer	PBS
Preservative	0.02% Sodium azide
Storage	Store as concentrated solution. Centrifuge briefly prior to opening vial. Store at 4°C.
Concentration	100 µg/ml (Please refer to the vial label for the specific concentration.)
Immunogen	Peptides
Purification	Affinity purified antibody
Conjugation	Unconjugated

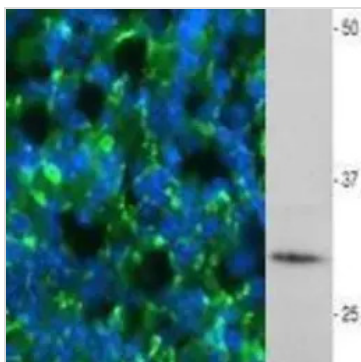
Note

For laboratory research use only. Not for any clinical, therapeutic, or diagnostic use in humans or animals. Not for animal or human consumption.

Purchasers shall not, and agree not to enable third parties to, analyze, copy, reverse engineer or otherwise attempt to determine the structure or sequence of the product.



For full product information, images and publications, please visit our [website](#).

DATA IMAGES

GTX85465 IHC Image

In this tissue section through an e13 mouse brain, PLP (green staining) can be seen in immature oligodendrocytes of white matter tracts. DAPI (blue staining) allows visualization of nuclei.



For full product information, images and publications, please visit our [website](#).