

## MPZ antibody

Cat. No. GTX85466

<b>Host</b>	Chicken
<b>Clonality</b>	Polyclonal
<b>Isotype</b>	IgY
<b>Applications</b>	WB, ICC/IF, IHC-P, IHC
<b>Reactivity</b>	Human, Mouse, Rat

References ( 1 )

Package

50 µg

## Applications

## Application Note

\*Optimal dilutions/concentrations should be determined by the researcher.

Suggested dilution	Recommended dilution
WB	1:10000-1:20000
ICC/IF	Assay dependent
IHC-P	Assay dependent
IHC	1:2000-1:5000

Not tested in other applications.

Calculated MW 28 kDa. ( [Note](#) )

## Properties

<b>Form</b>	Liquid
<b>Buffer</b>	PBS
<b>Preservative</b>	0.02% Sodium azide
<b>Storage</b>	Store as concentrated solution. Centrifuge briefly prior to opening vial. Store at 4°C. DO NOT FREEZE.
<b>Concentration</b>	200 µg/ml (Please refer to the vial label for the specific concentration.)
<b>Immunogen</b>	Chickens were immunized with two synthetic peptide / keyhole limpet hemocyanin (KLH) conjugates. These synthetic peptides corresponded to different regions of the Po gene product, but are shared between the human (NP_000521, NCBI) and mouse (NP_032649, NCBI) sequences.
<b>Purification</b>	Purified by antigen-affinity chromatography
<b>Conjugation</b>	Unconjugated

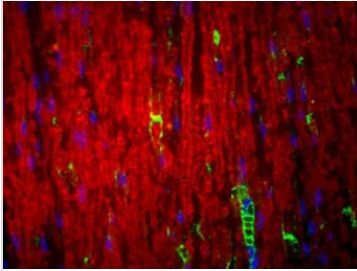


For full product information, images and publications, please visit our [website](#).

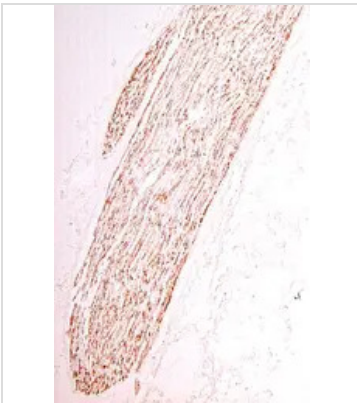
For laboratory research use only. Not for any clinical, therapeutic, or diagnostic use in humans or animals. Not for animal or human consumption.

**Note**

Purchasers shall not, and agree not to enable third parties to, analyze, copy, reverse engineer or otherwise attempt to determine the structure or sequence of the product.

**DATA IMAGES**

**GTX85466 IHC Image**

Po (green staining) can be seen in the myelin and Schwann cell processes surrounding the nodes of Ranvier. In this photomicrograph, rabbit antibodies against LAMP (lysosome-associated membrane glycoprotein) (red staining) serves as the counterstain, and DAPI (blue staining) allows visualization of nuclei.


**GTX85466 IHC-P Image**

IHC-P analysis of 4.0% paraformaldehyde-fixed tissue section through the sciatic nerve of an adult mouse using GTX85466 MPZ antibody.

Dilution : 1:1000



For full product information, images and publications, please visit our [website](#).