

Synaptotagmin antibody

Cat. No. GTX85467

Host	Chicken
Clonality	Polyclonal
Isotype	IgY
Applications	WB, ICC/IF, IHC-Fr, IHC
Reactivity	Human, Mouse, Rat

Package

50 µg

Applications

Application Note

*Optimal dilutions/concentrations should be determined by the researcher.

Suggested dilution	Recommended dilution
WB	1:1000-1:2000
ICC/IF	Assay dependent
IHC-Fr	Assay dependent
IHC	1:1000-1:2000

Not tested in other applications.

Calculated MW 47.44 kDa. ([Note](#))

Properties

Form	Liquid
Buffer	PBS
Preservative	0.02% Sodium azide
Storage	Store as concentrated solution. Centrifuge briefly prior to opening vial. Store at 4°C. DO NOT FREEZE.
Concentration	400 µg/ml (Please refer to the vial label for the specific concentration.)
Immunogen	Chickens were immunized with four synthetic peptide / keyhole limpet hemocyanin (KLH) conjugates.
Purification	Purified by antigen-affinity chromatography
Conjugation	Unconjugated

Note

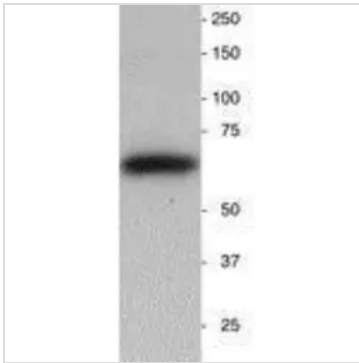
For laboratory research use only. Not for any clinical, therapeutic, or diagnostic use in humans or animals. Not for animal or human consumption.

Purchasers shall not, and agree not to enable third parties to, analyze, copy, reverse engineer or otherwise attempt to determine the structure or sequence of the product.



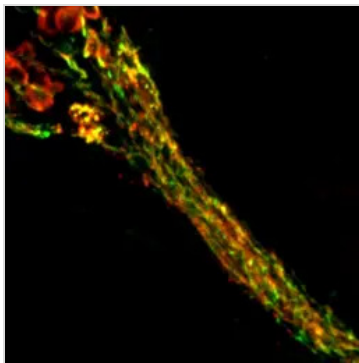
For full product information, images and publications, please visit our [website](#).

DATA IMAGES



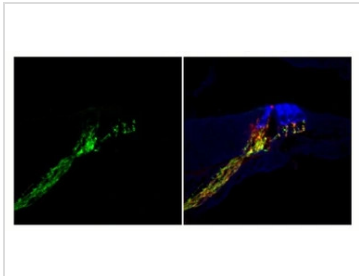
GTX85467 WB Image

WB analysis of neonatal mouse brain homogenate using GTX85467 Synaptotagmin antibody.
Loading : 25 ug



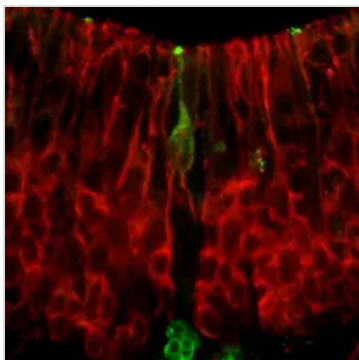
GTX85467 IHC-Fr Image

IHC-Fr analysis of cochlear nerve in an adult mouse using GTX85467 Synaptotagmin antibody.
Green : Primary antibody
Red : NFH antibody
Dilution : 1:1000



GTX85467 IHC-Fr Image

IHC-Fr analysis of cochlear nerve and organ of Corti in an adult mouse using GTX85467 Synaptotagmin antibody.
Green : Primary antibody
Red : NFH antibody
Blue : Vimentin antibody
Dilution : 1:1000



GTX85467 IHC-Fr Image

IHC-Fr analysis of e16 mouse brain using GTX85467 Synaptotagmin antibody.
Green : Primary antibody
Red : Vimentin antibody
Dilution : 1:1000



For full product information, images and publications, please visit our [website](https://www.genetex.com).