

Tau antibody

Cat. No. GTX85468

| | |
|---------------------|--------------------|
| Host | Chicken |
| Clonality | Polyclonal |
| Isotype | IgY |
| Applications | ICC/IF, IHC-P, IHC |
| Reactivity | Human, Mouse, Rat |

Package
50 µg

Applications

Application Note

*Optimal dilutions/concentrations should be determined by the researcher.

| Suggested dilution | Recommended dilution |
|--------------------|----------------------|
| ICC/IF | Assay dependent |
| IHC-P | Assay dependent |
| IHC | 1:5000-1:10000 |

Not tested in other applications.

Properties

| | |
|----------------------|--|
| Form | Liquid |
| Buffer | PBS |
| Preservative | 0.02% Sodium azide |
| Storage | Store as concentrated solution. Centrifuge briefly prior to opening vial. Store at 4°C. DO NOT FREEZE. |
| Concentration | 200 µg/ml (Please refer to the vial label for the specific concentration.) |
| Immunogen | Chickens were immunized with two synthetic peptide / keyhole limpet hemocyanin (KLH) conjugates. These synthetic peptides corresponded to different and nonphosphorylated regions of the Tau gene product, but are shared between the human (NP_05819, NCBI) and mouse (P01637, NCBI) sequences. |
| Purification | Purified by antigen-affinity chromatography |
| Conjugation | Unconjugated |

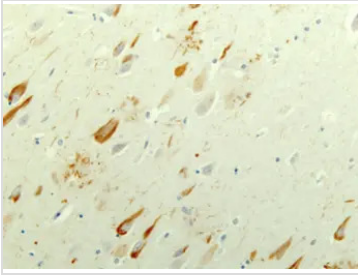
Note

For laboratory research use only. Not for any clinical, therapeutic, or diagnostic use in humans or animals. Not for animal or human consumption.

Purchasers shall not, and agree not to enable third parties to, analyze, copy, reverse engineer or otherwise attempt to determine the structure or sequence of the product.



For full product information, images and publications, please visit our [website](#).

DATA IMAGES

GTX85468 IHC-P Image

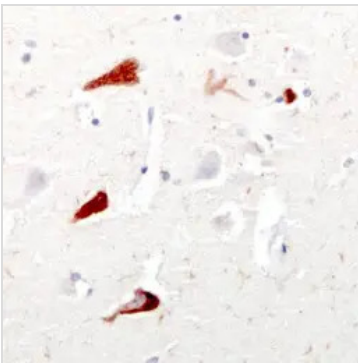
IHC-P analysis of neurofibrillary tangles in cortical neurons of an Alzheimer's Disease patient using GTX85468 Tau antibody.

Dilution : 1:10,000


GTX85468 IHC-P Image

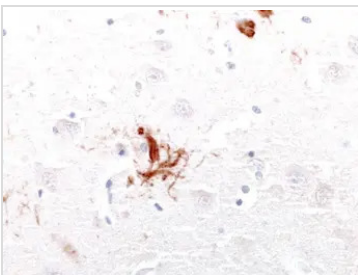
IHC-P analysis of neurofibrillary tangles in cortical neurons of an Alzheimer's Disease patient using GTX85468 Tau antibody.

Dilution : 1:10,000


GTX85468 IHC-P Image

IHC-P analysis of neurofibrillary tangles in cortical neurons of an Alzheimer's Disease patient using GTX85468 Tau antibody.

Dilution : 1:10,000


GTX85468 IHC-P Image

IHC-P analysis of neurofibrillary tangles in cortical neurons of an Alzheimer's Disease patient using GTX85468 Tau antibody.

Dilution : 1:10,000



For full product information, images and publications, please visit our [website](#).