

beta Tubulin 3/ Tuj1 antibody

Cat. No. GTX85469

| | |
|--------------|-------------------|
| Host | Chicken |
| Clonality | Polyclonal |
| Isotype | IgY |
| Applications | WB, ICC/IF, IHC |
| Reactivity | Human, Mouse, Rat |

References (18)

Package

50 µg

Applications

Application Note

*Optimal dilutions/concentrations should be determined by the researcher.

| Suggested dilution | Recommended dilution |
|--------------------|----------------------|
| WB | 1:10000-1:20000 |
| ICC/IF | Assay dependent |
| IHC | 1:2000-1:5000 |

Not tested in other applications.

| | |
|---------------|----------------------------------|
| Calculated MW | 50 kDa. (Note) |
| Product Note | tubulin, beta 3 |

Properties

| | |
|---------------|--|
| Form | Liquid |
| Buffer | PBS |
| Preservative | 0.02% Sodium azide |
| Storage | Store as concentrated solution. Centrifuge briefly prior to opening vial. Store at 4°C. DO NOT FREEZE. |
| Concentration | 100 µg/ml (Please refer to the vial label for the specific concentration.) |
| Immunogen | Chickens were immunized with three synthetic peptide / keyhole limpet hemocyanin (KLH) conjugates. These synthetic peptides corresponded to different regions of the β -Tubulin 3 gene product, but are shared between the human (NP_AAL28094, NCBI) and rat (AAM28438, NCBI) protein sequences. |
| Purification | Purified by antigen-affinity chromatography. |
| Conjugation | Unconjugated |



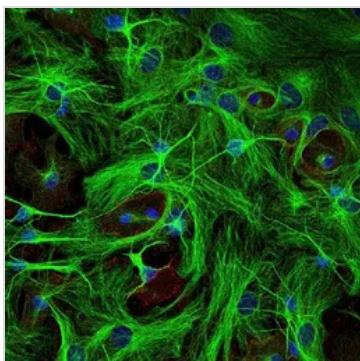
For full product information, images and publications, please visit our [website](#).

For laboratory research use only. Not for any clinical, therapeutic, or diagnostic use in humans or animals. Not for animal or human consumption.

Note

Purchasers shall not, and agree not to enable third parties to, analyze, copy, reverse engineer or otherwise attempt to determine the structure or sequence of the product.

DATA IMAGES



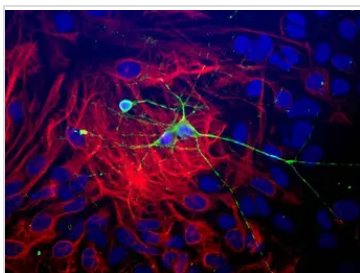
GTx85469 ICC/IF Image

ICC/IF analysis of paraformaldehyde-fixed (4%) SpH64 cells using GTx85469 beta Tubulin 3 / Tuj1 antibody.

Green : Primary antibody

RED : Actin antibody

BLUE : DAPI Dilution : 1:1000



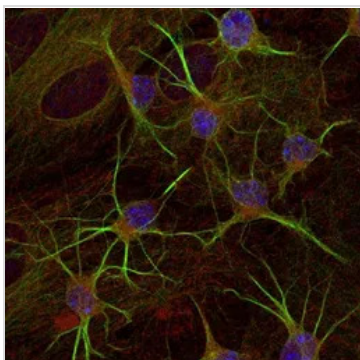
GTx85469 ICC/IF Image

ICC/IF analysis of paraformaldehyde-fixed (4%) neonatal mouse brain cultures using GTx85469 beta Tubulin 3 / Tuj1 antibody.

Green : Primary antibody

RED : GFAP antibody

BLUE : DAPI Dilution : 1:1000



GTx85469 ICC/IF Image

ICC/IF analysis of paraformaldehyde-fixed (4%) SpH64 cells using GTx85469 beta Tubulin 3 / Tuj1 antibody.

Green : Primary antibody

RED : Actin antibody

BLUE : DAPI Dilution : 1:1000



For full product information, images and publications, please visit our [website](https://www.genetex.com).