

## beta Tubulin 3/ Tuj1 antibody

Cat. No. GTX85469

Host	Chicken
Clonality	Polyclonal
Isotype	IgY
Applications	WB, ICC/IF, IHC
Reactivity	Human, Mouse, Rat

References ( 16 )

Package

50 µg

## Applications

## Application Note

\*Optimal dilutions/concentrations should be determined by the researcher.

Suggested dilution	Recommended dilution
WB	1:10000-1:20000
ICC/IF	Assay dependent
IHC	1:2000-1:5000

Not tested in other applications.

Calculated MW	50 kDa. ( <a href="#">Note</a> )
Product Note	tubulin, beta 3

## Properties

Form	Liquid
Buffer	PBS
Preservative	0.02% Sodium azide
Storage	Store as concentrated solution. Centrifuge briefly prior to opening vial. Store at 4°C. DO NOT FREEZE.
Concentration	100 µg/ml (Please refer to the vial label for the specific concentration.)
Immunogen	Chickens were immunized with three synthetic peptide / keyhole limpet hemocyanin (KLH) conjugates. These synthetic peptides corresponded to different regions of the $\beta$ -Tubulin 3 gene product, but are shared between the human (NP_AAL28094, NCBI) and rat (AAM28438, NCBI) protein sequences.
Purification	Purified by antigen-affinity chromatography.
Conjugation	Unconjugated

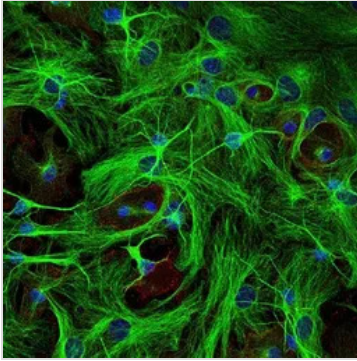


For full product information, images and publications, please visit our [website](#).

For laboratory research use only. Not for any clinical, therapeutic, or diagnostic use in humans or animals. Not for animal or human consumption.

**Note**

Purchasers shall not, and agree not to enable third parties to, analyze, copy, reverse engineer or otherwise attempt to determine the structure or sequence of the product.

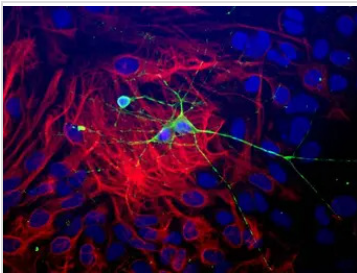
**DATA IMAGES**

**GTx85469 ICC/IF Image**

ICC/IF analysis of paraformaldehyde-fixed (4%) SpH64 cells using GTx85469 beta Tubulin 3 / Tuj1 antibody.

Green : Primary antibody

RED : Actin antibody

BLUE : DAPI Dilution : 1:1000

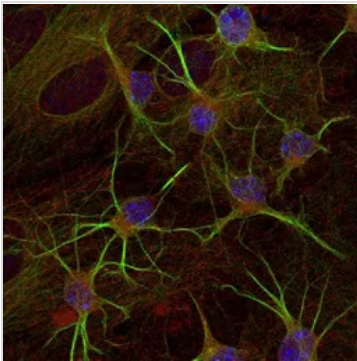

**GTx85469 ICC/IF Image**

ICC/IF analysis of paraformaldehyde-fixed (4%) neonatal mouse brain cultures using GTx85469 beta Tubulin 3 / Tuj1 antibody.

Green : Primary antibody

RED : GFAP antibody

BLUE : DAPI Dilution : 1:1000


**GTx85469 ICC/IF Image**

ICC/IF analysis of paraformaldehyde-fixed (4%) SpH64 cells using GTx85469 beta Tubulin 3 / Tuj1 antibody.

Green : Primary antibody

RED : Actin antibody

BLUE : DAPI Dilution : 1:1000



For full product information, images and publications, please visit our [website](#).