

## DDDDK tag antibody

Cat. No. GTX85472

Host	Chicken
Clonality	Polyclonal
Isotype	IgY
Applications	WB, ICC/IF, IP, ELISA, IHC
Reactivity	Species independent

References ( 2 )

Package

50 µg

## Applications

## Application Note

\*Optimal dilutions/concentrations should be determined by the researcher.

Suggested dilution	Recommended dilution
WB	1:1000-1:2000
ICC/IF	Assay dependent
IP	Assay dependent
ELISA	Assay dependent
IHC	1:500-1:1000

Not tested in other applications.

## Properties

Form	Liquid
Buffer	PBS
Preservative	0.02% Sodium azide
Storage	Store as concentrated solution. Centrifuge briefly prior to opening vial. Store at 4°C. DO NOT FREEZE.
Concentration	100 µg/ml (Please refer to the vial label for the specific concentration.)
Immunogen	Chickens were immunized with a synthetic peptide containing the DYKDDDDK epitope conjugated to keyhole limpet hemocyanin (KLH).
Purification	Purified by antigen-affinity chromatography
Conjugation	Unconjugated

## Note

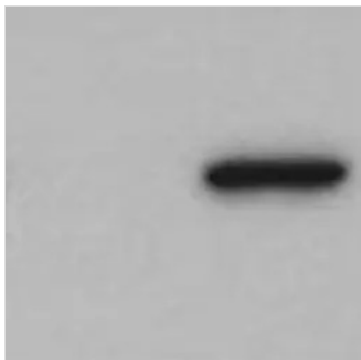
For laboratory research use only. Not for any clinical, therapeutic, or diagnostic use in humans or animals. Not for animal or human consumption.

Purchasers shall not, and agree not to enable third parties to, analyze, copy, reverse engineer or otherwise attempt to determine the structure or sequence of the product.



For full product information, images and publications, please visit our [website](#).

## DATA IMAGES



### GTX85472 WB Image

WB analysis of RDF1 transfected cell using GTX85472 DDDDK tag antibody.

Right : Cultured HEK cells were transfected with a plasmid containing the RDF1 cDNA fused with a DDDDK epitope tag at its C-terminus

Left : Cultured HEK cells with an empty plasmid vector. Loading : 25 ug of protein loaded in each lane.



For full product information, images and publications, please visit our [website](#).