

Precerebellin antibody

Cat. No. GTX85500

Host	Rabbit
Clonality	Polyclonal
Isotype	IgG
Applications	WB, ICC/IF, ELISA
Reactivity	Human, Mouse, Rat

Package
100 µg

Applications

Application Note

*Optimal dilutions/concentrations should be determined by the researcher.

Suggested dilution	Recommended dilution
WB	2 - 4 µg/mL
ICC/IF	10 µg/mL
ELISA	Assay dependent

Not tested in other applications.

Calculated MW	21 kDa. (Note)
Product Note	This antibody is specific for Precerebellin C-Terminus

Properties

Form	Liquid
Buffer	PBS
Preservative	0.02% Sodium azide
Storage	Store as concentrated solution. Centrifuge briefly prior to opening vial. For short-term storage (1-2 weeks), store at 4°C. For long-term storage, aliquot and store at -20°C or below. Avoid multiple freeze-thaw cycles.
Concentration	1 mg/ml (Please refer to the vial label for the specific concentration.)
Immunogen	Precerebellin antibody was raised against a 16 amino acid synthetic peptide from near the carboxy- terminus human precerebellin. The immunogen is located within the last 50 amino acids of Precerebellin.
Purification	Purified by antigen-affinity chromatography
Conjugation	Unconjugated



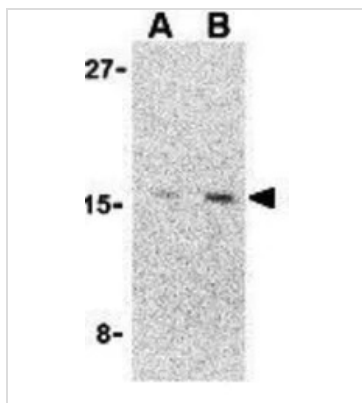
For full product information, images and publications, please visit our [website](#).

For laboratory research use only. Not for any clinical, therapeutic, or diagnostic use in humans or animals. Not for animal or human consumption.

Note

Purchasers shall not, and agree not to enable third parties to, analyze, copy, reverse engineer or otherwise attempt to determine the structure or sequence of the product.

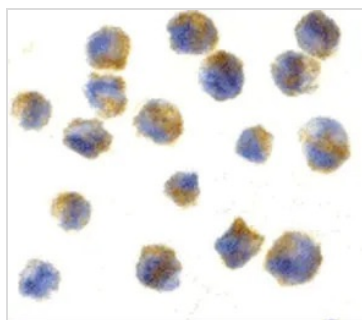
DATA IMAGES



GTx85500 WB Image

WB analysis of 293 cell lysate using GTx85500 Precerebellin antibody.

Working concentration : (A) 2 and (B) 4 µg/ml



GTx85500 ICC/IF Image

ICC/IF analysis of 3T3 cells using GTx85500 Precerebellin antibody.

Working concentration : 10 µg/ml



For full product information, images and publications, please visit our [website](#).