

CTRP4 antibody

Cat. No. GTX85503

Host	Rabbit
Clonality	Polyclonal
Isotype	IgG
Applications	WB, IHC-P, ELISA
Reactivity	Human, Mouse, Rat

Package
100 µg

Applications

Application Note

*Optimal dilutions/concentrations should be determined by the researcher.

Suggested dilution	Recommended dilution
WB	1 - 4 µg/mL
IHC-P	10 µg/mL
ELISA	Assay dependent

Not tested in other applications.

Calculated MW 35 kDa. ([Note](#))

Product Note

These proteins are often highly modified post-translationally and migrate in SDS-PAGE at positions other than their predicted size.

Properties

Form	Liquid
Buffer	PBS
Preservative	0.02% Sodium azide
Storage	Store as concentrated solution. Centrifuge briefly prior to opening vial. For short-term storage (1-2 weeks), store at 4°C. For long-term storage, aliquot and store at -20°C or below. Avoid multiple freeze-thaw cycles.
Concentration	1 mg/ml (Please refer to the vial label for the specific concentration.)
Immunogen	CTRP4 antibody was raised against a 16 amino acid synthetic peptide from near the center of human CTRP4. The immunogen is located within amino acids 90 - 140 of CTRP4.
Purification	Purified by antigen-affinity chromatography
Conjugation	Unconjugated



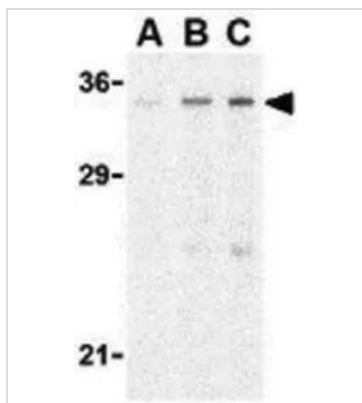
For full product information, images and publications, please visit our [website](#).

For laboratory research use only. Not for any clinical, therapeutic, or diagnostic use in humans or animals. Not for animal or human consumption.

Note

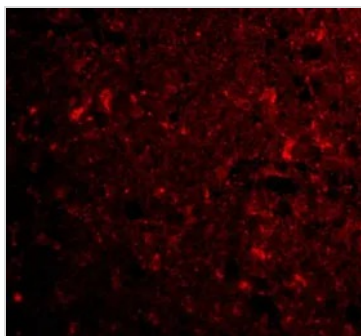
Purchasers shall not, and agree not to enable third parties to, analyze, copy, reverse engineer or otherwise attempt to determine the structure or sequence of the product.

DATA IMAGES

**GTX85503 WB Image**

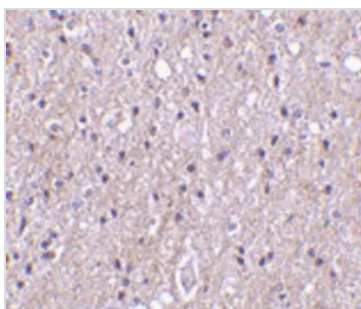
WB analysis of rat brain tissue lysate using GTX85503 CTRP4 antibody.

Working concentration : (A) 1, (B) 2, and (C) 4 $\mu\text{g/ml}$

**GTX85503 IHC-P Image**

IHC-P analysis of human brain tissue using GTX85503 CTRP4 antibody.

Working concentration : 20 $\mu\text{g/ml}$

**GTX85503 IHC-P Image**

IHC-P analysis of human brain tissue using GTX85503 CTRP4 antibody.

Working concentration : 10 $\mu\text{g/ml}$



For full product information, images and publications, please visit our [website](https://www.genetex.com).