

CTRP4 antibody

Cat. No. GTX85504

| | |
|---------------------|--------------------------|
| Host | Rabbit |
| Clonality | Polyclonal |
| Isotype | IgG |
| Applications | WB, ICC/IF, IHC-P, ELISA |
| Reactivity | Human, Mouse, Rat |

Package
100 µg

Applications

Application Note

*Optimal dilutions/concentrations should be determined by the researcher.

| Suggested dilution | Recommended dilution |
|--------------------|----------------------|
| WB | 1 - 4 µg/mL |
| ICC/IF | Assay dependent |
| IHC-P | 10 µg/mL |
| ELISA | Assay dependent |

Not tested in other applications.

Calculated MW 35 kDa. ([Note](#))

Product Note These proteins are often highly modified post-translationally and migrate in SDS-PAGE at positions other than their predicted size.

Properties

| | |
|----------------------|--|
| Form | Liquid |
| Buffer | PBS |
| Preservative | 0.02% Sodium azide |
| Storage | Store as concentrated solution. Centrifuge briefly prior to opening vial. For short-term storage (1-2 weeks), store at 4°C. For long-term storage, aliquot and store at -20°C or below. Avoid multiple freeze-thaw cycles. |
| Concentration | 1 mg/ml (Please refer to the vial label for the specific concentration.) |
| Immunogen | CTRP4 antibody was raised against a 16 amino acid synthetic peptide from near the carboxy terminus of human CTRP4. The immunogen is located within amino acids 240 - 290 of CTRP4. |
| Purification | Purified by antigen-affinity chromatography |
| Conjugation | Unconjugated |



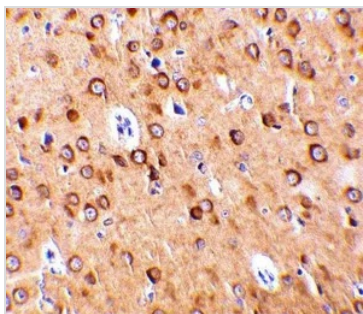
For full product information, images and publications, please visit our [website](#).

For laboratory research use only. Not for any clinical, therapeutic, or diagnostic use in humans or animals. Not for animal or human consumption.

Note

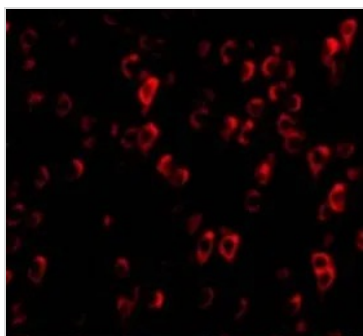
Purchasers shall not, and agree not to enable third parties to, analyze, copy, reverse engineer or otherwise attempt to determine the structure or sequence of the product.

DATA IMAGES

**GTX85504 IHC-P Image**

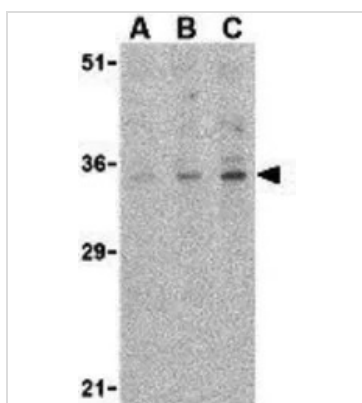
IHC-P analysis of rat brain tissue using GTX85504 CTRP4 antibody.

Working concentration : 10 $\mu\text{g/ml}$

**GTX85504 ICC/IF Image**

ICC/IF analysis of rat brain cells using GTX85504 CTRP4 antibody.

Working concentration : 20 $\mu\text{g/ml}$

**GTX85504 WB Image**

WB analysis of rat brain tissue lysate using GTX85504 CTRP4 antibody.

Working concentration : (A) 1, (B) 2, and (C) 4 $\mu\text{g/ml}$



For full product information, images and publications, please visit our [website](#).