

CTRP3 antibody

Cat. No. GTX85505

Host	Rabbit
Clonality	Polyclonal
Isotype	IgG
Applications	WB, IHC-P, ELISA
Reactivity	Human, Mouse

Package
100 µg

Applications

Application Note

*Optimal dilutions/concentrations should be determined by the researcher.

Suggested dilution	Recommended dilution
WB	1 µg/mL
IHC-P	2 µg/mL
ELISA	Assay dependent

Not tested in other applications.

Calculated MW 27 kDa. ([Note](#))

Product Note Multiple isoforms of CTRP3 are known to exist. CTRP3 antibody is predicted to not recognize other members of the CTRP protein family.

Properties

Form	Liquid
Buffer	PBS
Preservative	0.02% Sodium azide
Storage	Store as concentrated solution. Centrifuge briefly prior to opening vial. For short-term storage (1-2 weeks), store at 4°C. For long-term storage, aliquot and store at -20°C or below. Avoid multiple freeze-thaw cycles.
Concentration	1 mg/ml (Please refer to the vial label for the specific concentration.)
Immunogen	CTRP3 antibody was raised against a 16 amino acid synthetic peptide from near the center of human CTRP3. The immunogen is located within the first 50 amino acids of CTRP3.
Purification	Purified by antigen-affinity chromatography
Conjugation	Unconjugated

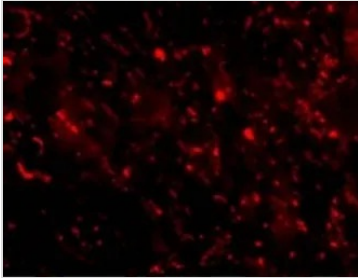


For full product information, images and publications, please visit our [website](#).

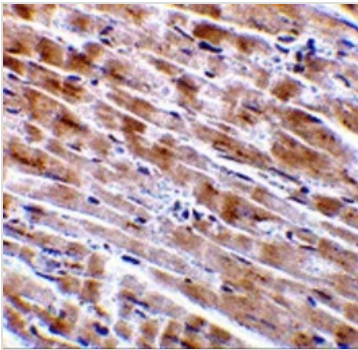
For laboratory research use only. Not for any clinical, therapeutic, or diagnostic use in humans or animals. Not for animal or human consumption.

Note
Purchasers shall not, and agree not to enable third parties to, analyze, copy, reverse engineer or otherwise attempt to determine the structure or sequence of the product.

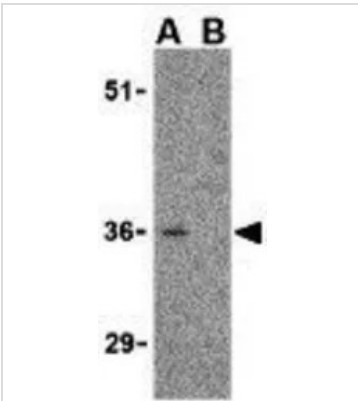
DATA IMAGES

**GTX85505 IHC-P Image**

IHC-P analysis of mouse heart tissue using GTX85505 CTRP3 antibody.
Working concentration : 10 µg/ml

**GTX85505 IHC-P Image**

IHC-P analysis of mouse heart tissue using GTX85505 CTRP3 antibody.
Working concentration : 2 µg/ml

**GTX85505 WB Image**

WB analysis of mouse heart cell lysate in (A) absence and (B) presence of blocking peptide. using GTX85505 CTRP3 antibody.
Working concentration : 1 µg/ml



For full product information, images and publications, please visit our [website](#).