

## MD2 antibody

Cat. No. GTX85517

Host	Rabbit
Clonality	Polyclonal
Isotype	IgG
Applications	WB, IHC-P, IHC-Fr, ELISA
Reactivity	Human, Mouse, Rat

References ( 7 )

Package

100 µg

## Applications

## Application Note

\*Optimal dilutions/concentrations should be determined by the researcher.

Suggested dilution	Recommended dilution
WB	0.5 - 2 µg/mL
IHC-P	2 µg/mL
IHC-Fr	Assay dependent
ELISA	Assay dependent

Not tested in other applications.

Calculated MW	19 kDa. ( <a href="#">Note</a> )
Product Note	This antibody is specific for MD-2 Internal

## Properties

Form	Liquid
Buffer	PBS
Preservative	0.02% Sodium azide
Storage	Store as concentrated solution. Centrifuge briefly prior to opening vial. For short-term storage (1-2 weeks), store at 4°C. For long-term storage, aliquot and store at -20°C or below. Avoid multiple freeze-thaw cycles.
Concentration	1 mg/ml (Please refer to the vial label for the specific concentration.)
Immunogen	MD-2 antibody was raised against a peptide corresponding to 13 amino acids near the center of human MD-2. The immunogen is located within the last 50 amino acids of MD-2.
Purification	Purified by antigen-affinity chromatography
Conjugation	Unconjugated

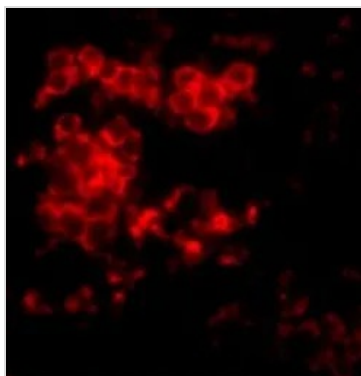


For full product information, images and publications, please visit our [website](#).

For laboratory research use only. Not for any clinical, therapeutic, or diagnostic use in humans or animals. Not for animal or human consumption.

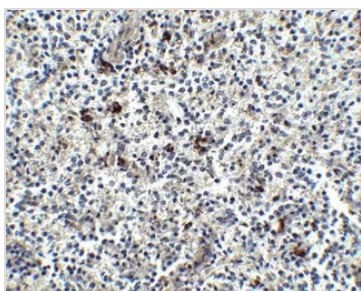
**Note**

Purchasers shall not, and agree not to enable third parties to, analyze, copy, reverse engineer or otherwise attempt to determine the structure or sequence of the product.

**DATA IMAGES**

**GTx85517 IHC-P Image**

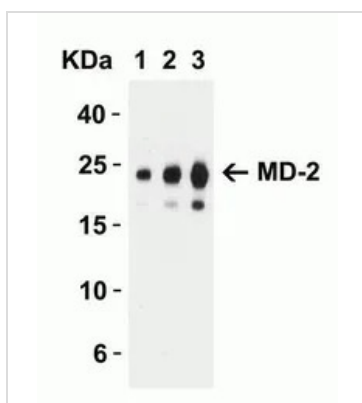
IHC-P analysis of rat spleen tissue using GTx85517 MD2 antibody.

Working concentration : 10 µg/ml


**GTx85517 IHC-P Image**

IHC-P analysis of human spleen tissue using GTx85517 MD2 antibody.

Working concentration : 2.5 µg/ml


**GTx85517 WB Image**

WB analysis of human MD-2 recombinant protein lysates using GTx85517 MD2 antibody.

Dilution : 0.5 µg/mL (Lane 1), 1µg/mL (Lane 2), and 2µg/mL (Lane 3)

Loading : 30 ng of lysates per lane



For full product information, images and publications, please visit our [website](#).