

PERP antibody

Cat. No. GTX85520

Host	Rabbit
Clonality	Polyclonal
Isotype	IgG
Applications	WB, ICC/IF, ELISA
Reactivity	Human

Package
100 µg

Applications

Application Note

*Optimal dilutions/concentrations should be determined by the researcher.

Suggested dilution	Recommended dilution
WB	1 µg/mL
ICC/IF	10 µg/mL
ELISA	Assay dependent

Not tested in other applications.

Calculated MW 22 kDa. ([Note](#))

Properties

Form	Liquid
Buffer	PBS
Preservative	0.02% Sodium azide
Storage	Store as concentrated solution. Centrifuge briefly prior to opening vial. For short-term storage (1-2 weeks), store at 4°C. For long-term storage, aliquot and store at -20°C or below. Avoid multiple freeze-thaw cycles.
Concentration	1 mg/ml (Please refer to the vial label for the specific concentration.)
Immunogen	PERP antibody was raised against a synthetic peptide corresponding to 17 amino acids near the carboxy terminus of human PERP. The immunogen is located within the last 50 amino acids of PERP.
Purification	Purified by antigen-affinity chromatography
Conjugation	Unconjugated

Note

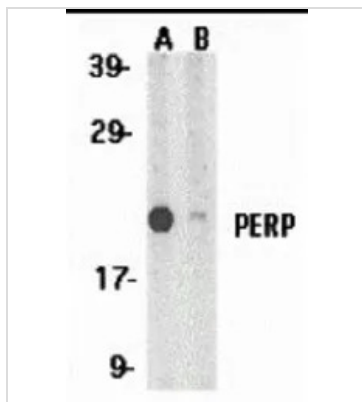
For laboratory research use only. Not for any clinical, therapeutic, or diagnostic use in humans or animals. Not for animal or human consumption.

Purchasers shall not, and agree not to enable third parties to, analyze, copy, reverse engineer or otherwise attempt to determine the structure or sequence of the product.



For full product information, images and publications, please visit our [website](#).

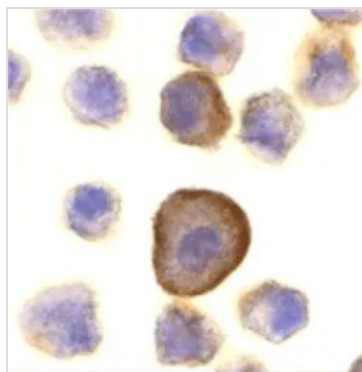
DATA IMAGES



GTx85520 WB Image

WB analysis of A431 cell lysate using GTx85520 PERP antibody in (A) the absence and (B) the presence of blocking peptide.

Dilution : 1 µg/ml



GTx85520 ICC/IF Image

ICC/IF analysis of A431 cells using GTx85520 PERP antibody.

Working concentration : 10 µg/ml



For full product information, images and publications, please visit our [website](https://www.genetex.com).