

Caspase 13 antibody

Cat. No. GTX85523

Host	Rabbit
Clonality	Polyclonal
Isotype	IgG
Applications	WB, IHC-P, ELISA
Reactivity	Human, Mouse, Rat

Package
100 µg

Applications

Application Note

*Optimal dilutions/concentrations should be determined by the researcher.

Suggested dilution	Recommended dilution
WB	1 µg/mL
IHC-P	10 µg/mL
ELISA	Assay dependent

Not tested in other applications.

Properties

Form	Liquid
Buffer	PBS
Preservative	0.02% Sodium azide
Storage	Store as concentrated solution. Centrifuge briefly prior to opening vial. For short-term storage (1-2 weeks), store at 4°C. For long-term storage, aliquot and store at -20°C or below. Avoid multiple freeze-thaw cycles.
Concentration	Batch dependent (Please refer to the vial label for the specific concentration.)
Immunogen	Caspase-13 antibody was raised against a 15 amino acid peptide near the amino terminus of human Caspase-13. The immunogen is located within amino acids 80 - 130 of Caspase-13.
Purification	Purified by ion exchange chromatography
Conjugation	Unconjugated

Note

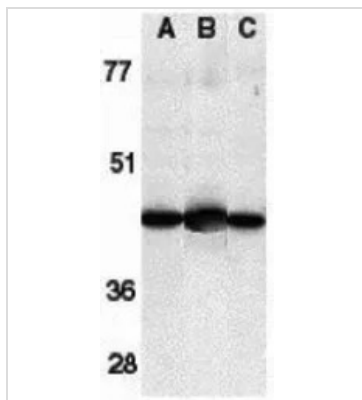
For laboratory research use only. Not for any clinical, therapeutic, or diagnostic use in humans or animals. Not for animal or human consumption.

Purchasers shall not, and agree not to enable third parties to, analyze, copy, reverse engineer or otherwise attempt to determine the structure or sequence of the product.



For full product information, images and publications, please visit our [website](#).

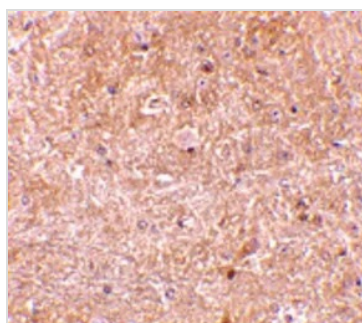
DATA IMAGES



GTX85523 WB Image

WB analysis of HL-60 cell lysate (A), mouse brain (B) and rat brain (C) tissue lysates using GTX85523 Caspase 13 antibody.

Working concentration : 1 µg/ml



GTX85523 IHC-P Image

IHC-P analysis of mouse brain tissue using GTX85523 Caspase 13 antibody.

Working concentration : 10 µg/ml



For full product information, images and publications, please visit our [website](#).