

Apoptotic DNA Ladder Isolation Kit

Cat. No. GTX85580
Package
50 assay

PRODUCT

Internucleosomal DNA fragmentation is a hallmark of apoptosis in mammalian cells. GeneTex's Apoptotic DNA Ladder Extraction Kit provides an easy and sensitive means for detecting DNA fragmentation in apoptotic cells. The new procedure selectively extract DNA ladders without interference of intact genomic DNA, which significantly increase the cell numbers that can be extracted and load on one agarose gel well, therefore increase the detection sensitivity.

- Detection method- Agarose gel electrophoresis (with Ethidium Bromide)
- Sample type- Mammalian cell types and tissues undergoing apoptosis
- Species reactivity- Mammalian
- Kit size- 50 assays
- Applications- Extraction of apoptotic DNA ladders without interference of intact genomic DNA

Summary

Features and Benefits

- Simple one-step procedure; takes only 2-4 hours
- Fast and convenient
- The kit can extract apoptotic DNA ladder from both tissues and cells with as little as 5% or less apoptotic cell population. The extracted apoptotic DNA ladder fragments can be easily visualized by agarose gel electrophoreses.

Kit Contents:

DNA Ladder Extraction Buffer
Enzyme A Solution
Enzyme B (Lyophilized)
Ammonium Acetate Solution
DNA Suspension Buffer

Properties

Storage

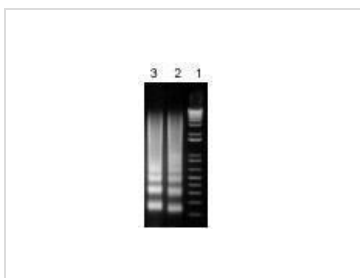
Store at -20°C. Product has an expected shelf life of 12 months.

Note

For laboratory research use only. Not for any clinical, therapeutic, or diagnostic use in humans or animals. Not for animal or human consumption.

Purchasers shall not, and agree not to enable third parties to, analyze, copy, reverse engineer or otherwise attempt to determine the structure or sequence of the product.

DATA IMAGES



GTX85580 Image

DNA ladders were extracted from 2×10^6 Jurkat cells treated with $2 \mu\text{M}$ Camptothecin, according to kit instructions. The kit extracts ladderized DNA only, not the intact genomics, therefore more cells can be extracted and load on the agarose gel. Lane 1: 1 kb DNA ladder; Lane 2: 6 hour induction; Lane 3: 12 hour induction.



For full product information, images and publications, please visit our [website](https://www.genetex.com).