

Annexin V-EGFP Apoptosis Detection Kit

Cat. No. GTX85588

Applications

ICC/IF

Package

100 assay

PRODUCT

The Annexin V-EGFP Apoptosis Detection Kit is based on the observation that soon after initiating apoptosis, most cell types translocate the membrane phospholipid phosphatidylserine (PS) from the inner face of the plasma membrane to the cell surface. Once on the cell surface, PS can be easily detected by staining with an enhanced green fluorescent protein (EGFP) fusion of annexin V, a protein that has a strong natural affinity for PS. The one-step staining procedure takes only 10 minutes. In addition, the assay can be directly performed on live cells. Detection can be analyzed by flow cytometry or by fluorescence microscopy with a FITC filter. EGFP is brighter and more photo-stable than other fluorescent reagents. The kit can differentiate apoptosis vs necrosis when performing both annexin V-EGFP and PI staining.

Summary

- Detection method- Flow cytometry (Ex = 488 nm; Em = 530 nm) and fluorescence microscopy
- Sample type- Living cells (suspension and adherent)
- Species reactivity- Mammalian
- Applications-Detect early/middle stages of apoptosis; differentiate apoptosis from necrosis.

Features and Benefits

- Simple one step staining procedure in 10 minutes
- Fast and convenient
- EGFP is a bright and photo-stable green fluorescent protein and the kit can differentiate apoptosis vs necrosis when performing both annexin V-EGFP and PI staining

Kit Contents:

Annexin V-EGFP
1X Binding Buffer
Propidium Iodide (PI)

Applications

Application Note

*Optimal dilutions/concentrations should be determined by the researcher.

Suggested dilution

ICC/IF

Recommended dilution

Assay dependent

Not tested in other applications.

Properties

Storage

Store at +4°C. Product has an expected shelf life of 12 months.

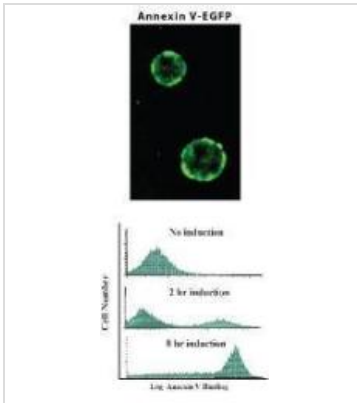
Note

For laboratory research use only. Not for any clinical, therapeutic, or diagnostic use in humans or animals. Not for animal or human consumption.

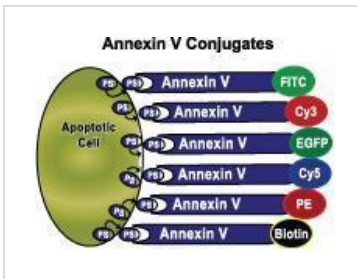
Purchasers shall not, and agree not to enable third parties to, analyze, copy, reverse engineer or otherwise attempt to determine the structure or sequence of the product.



For full product information, images and publications, please visit our [website](#).

DATA IMAGES

GTX85588 ICC/IF Image

Detection of Apoptosis with Annexin V-EGFP. Apoptosis was induced in Jurkat cells by camptothecin (2 mM) for various times as indicated. Cells were collected and incubated with Annexin V-EGFP for 5 minutes according to the kit instructions. Results were analyzed by fluorescence microscopy (top panel) and flow cytometry (bottom panel).


GTX85588 Image


For full product information, images and publications, please visit our [website](https://www.genetex.com).