

# Annexin V-Cy3 Apoptosis Detection Kit

**Cat. No. GTX85590**
**Applications** ICC/IF

**Package**  
100 assay

## PRODUCT

Annexin V Apoptosis Detection Kit is based on the observation that soon after initiating apoptosis, cells translocate the membrane phosphatidyl-serine (PS) from the inner face of the plasma membrane to the cell surface. Once on the cell surface, PS can be easily detected by staining with a fluorescent conjugate of Annexin V, a protein that has a high affinity for PS. The one-step staining procedure takes only 10 minutes. Detection can be analyzed by flow cytometry or by fluorescence microscopy.

- Detection method- Flow cytometry (Ex = 543 nm; Em = 570 nm) and fluorescence microscopy
- Sample type- Living cells (suspension and adherant)
- Species reactivity- Mammalian

## Summary

### Features and Benefits

- Simple one step staining procedure in 10 minutes
- Fast and convenient
- Cy3 shows brighter red fluorescence

### Kit Contents:

Annexin V-Cy3  
1X Binding Buffer

## Applications

### Application Note

\*Optimal dilutions/concentrations should be determined by the researcher.

Suggested dilution	Recommended dilution
ICC/IF	Assay dependent

Not tested in other applications.

## Properties

**Storage** Store at +4°C. Product has an expected shelf life of 12 months.

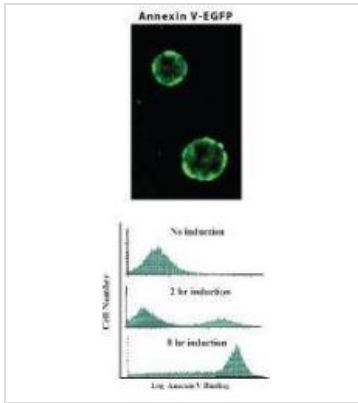


For full product information, images and publications, please visit our [website](#).

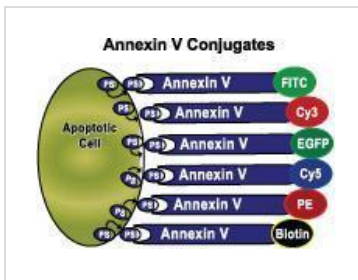
For laboratory research use only. Not for any clinical, therapeutic, or diagnostic use in humans or animals. Not for animal or human consumption.

**Note**

Purchasers shall not, and agree not to enable third parties to, analyze, copy, reverse engineer or otherwise attempt to determine the structure or sequence of the product.

**DATA IMAGES**

**GTx85590 ICC/IF Image**

Detection of Apoptosis with Annexin V-EGFP. Apoptosis was induced in Jurkat cells by camptothecin (2 mM) for various times as indicated. Cells were collected and incubated with Annexin V-EGFP for 5 minutes according to the kit instructions. Results were analyzed by fluorescence microscopy (top panel) and flow cytometry (bottom panel).


**GTx85590 Image**


For full product information, images and publications, please visit our [website](https://www.genetex.com).