

Annexin V-FITC Apoptosis Detection Kit

Cat. No. GTX85591**Applications**

ICC/IF, FCM

References (7)

Package

100 assay

PRODUCT

Annexin V Apoptosis Detection Kit is based on the observation that soon after initiating apoptosis, cells translocate the membrane phosphatidylserine (PS) from the inner face of the plasma membrane to the cell surface. Once on the cell surface, PS can be easily detected by staining with a fluorescent conjugate of Annexin V, a protein that has a high affinity for PS. The one-step staining procedure takes only 5-15 minutes. Detection can be analyzed by flow cytometry or fluorescence microscopy. The kit can differentiate apoptosis vs necrosis when performing both Annexin V-FITC and PI staining.

Detection method - Flow cytometry (Ex = 488 nm; Em = 530 nm) and fluorescence microscopy

Sample type - Living cells (suspension and adherent)

Species reactivity - Mammalian

Applications - Detect early/middle stages of apoptosis; differentiate apoptosis from necrosis.

Features and Benefits

Simple one step staining procedure in 5-15 minutes

Fast and convenient

Kit can differentiate apoptosis vs necrosis when performing both Annexin V-FITC and PI staining

Summary**Kit Contents:**

Annexin V-FITC - Formulated in 0.01 M PBS pH 7.4, 150 mM NaCl, 1% BSA and 0.09% sodium azide as a preservative.

1X Binding Buffer - Formulated in 0.01 M PBS pH 7.4, 150 mM NaCl. (Caution: Propidium Iodide Solution is toxic and mutagenic; Please handle with care.)

Propidium Iodide (PI) - No preservative added

Other Materials and Solutions Required:

Fluorescence Microscope or Flow Cytometer (Capable of FITC and Propidium Iodide Detection)

Microcentrifuge

Adjustable Pipettors (100-1000 µl, 10-200 µl, and 1-20 µl)

Ice Bucket and Ice

PBS Buffer

Microcentrifuge Tubes

Applications**Application Note**

*Optimal dilutions/concentrations should be determined by the researcher.

Suggested dilution**Recommended dilution**

ICC/IF

Assay dependent

FCM

Assay dependent

Not tested in other applications.

Properties**Storage**

Stable when stored dark at 2°-8°C. Do Not Freeze.



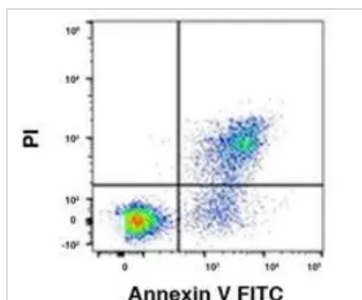
For full product information, images and publications, please visit our [website](#).

Date 2025 / 05 / 21 Page 1 of 2

For laboratory research use only. Not for any clinical, therapeutic, or diagnostic use in humans or animals. Not for animal or human consumption.

Note

Purchasers shall not, and agree not to enable third parties to, analyze, copy, reverse engineer or otherwise attempt to determine the structure or sequence of the product.

DATA IMAGES

GTx85591 FCM Image

FACS analysis of Jurkat cells treated overnight with 1ug/mL Fas antibody using GTx85591 Annexin V-FITC Apoptosis Detection Kit.

Bottom right quadrant : Viable cells undergoing early apoptosis.

Top right quadrant : Cells that are in late-stage apoptosis.



For full product information, images and publications, please visit our [website](#).