

CDK7 (phospho Ser164/Thr170) antibody

Cat. No. GTX85601

Host	Rabbit
Clonality	Polyclonal
Isotype	IgG
Applications	ICC/IF, IHC-P
Reactivity	Human

Package
50 µl

Applications

Application Note

*Optimal dilutions/concentrations should be determined by the researcher.

Suggested dilution	Recommended dilution
ICC/IF	Assay dependent
IHC-P	Assay dependent

Not tested in other applications.

Calculated MW 39 kDa. ([Note](#))

Properties

Form	Liquid
Buffer	PBS pH 7.2, 0.09% sodium azide, 50% glycerol
Storage	Store as concentrated solution. Centrifuge briefly prior to opening vial. For short-term storage (1-2 weeks), store at 4°C. For long-term storage, aliquot and store at -20°C or below. Avoid multiple freeze-thaw cycles.
Concentration	Batch dependent (Please refer to the vial label for the specific concentration.)
Immunogen	Synthetic peptide
Purification	Purified by affinity chromatography
Conjugation	Unconjugated

Note

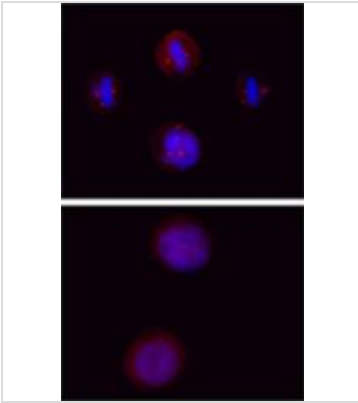
For laboratory research use only. Not for any clinical, therapeutic, or diagnostic use in humans or animals. Not for animal or human consumption.

Purchasers shall not, and agree not to enable third parties to, analyze, copy, reverse engineer or otherwise attempt to determine the structure or sequence of the product.

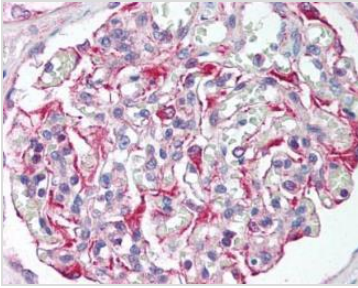


For full product information, images and publications, please visit our [website](#).

DATA IMAGES

**GTX85601 ICC/IF Image**

ICC/IF analysis of untreated HeLa cells (Lower Panel) or nocodazole treated HeLa cells (Upper Panel) using GTX85601 CDK7 (phospho Ser164/Thr170) antibody.

**GTX85601 IHC-P Image**

IHC-P analysis of human kidney tissue using GTX85601 CDK7 (phospho Ser164/Thr170) antibody.
Dilution : 10 µg/ml.



For full product information, images and publications, please visit our [website](#).