

## IL31 antibody

Cat. No. GTX85642

<b>Host</b>	Rabbit
<b>Clonality</b>	Polyclonal
<b>Isotype</b>	IgG
<b>Applications</b>	WB, IHC-P, ELISA
<b>Reactivity</b>	Human

References ( 1 )  
 Package  
 50 µg

## Applications

## Application Note

\*Optimal dilutions/concentrations should be determined by the researcher.

Suggested dilution	Recommended dilution
WB	Assay dependent
IHC-P	5 µg/ml
ELISA	Assay dependent

Not tested in other applications.

**Calculated MW** 18 kDa. ( [Note](#) )

## Properties

<b>Form</b>	Liquid
<b>Buffer</b>	PBS
<b>Preservative</b>	0.02% Sodium azide
<b>Storage</b>	Store as concentrated solution. Centrifuge briefly prior to opening vial. For short-term storage (1-2 weeks), store at 4°C. For long-term storage, aliquot and store at -20°C or below. Avoid multiple freeze-thaw cycles.
<b>Concentration</b>	1 mg/ml (Please refer to the vial label for the specific concentration.)
<b>Immunogen</b>	A 18 amino acid synthetic peptide near the center of human IL-31. The immunogen is located within amino acids 60 - 110 of IL-31.
<b>Purification</b>	Purified by antigen-affinity chromatography
<b>Conjugation</b>	Unconjugated

## Note

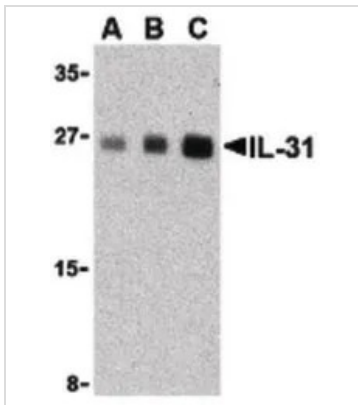
For laboratory research use only. Not for any clinical, therapeutic, or diagnostic use in humans or animals. Not for animal or human consumption.

Purchasers shall not, and agree not to enable third parties to, analyze, copy, reverse engineer or otherwise attempt to determine the structure or sequence of the product.



For full product information, images and publications, please visit our [website](#).

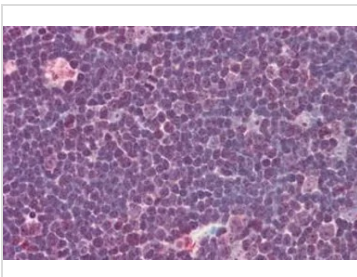
## DATA IMAGES

**GTX85642 WB Image**

WB analysis of human skeletal muscle tissue lysate using GTX85642 IL31 antibody.  
Dilution : 2.5 µg/mL (Lane A), 5 µg/mL (Lane B), and 10 µg/mL (Lane C)

**GTX85642 IHC-P Image**

IHC-P analysis of human skeletal muscle tissue using GTX85642 IL31 antibody.  
Dilution : 20 µg/ml

**GTX85642 IHC-P Image**

IHC-P analysis of human thymus tissue using GTX85642 IL31 antibody.  
Antigen retrieval : Heat-induced antigen retrieval  
Dilution : 5 µg/ml



For full product information, images and publications, please visit our [website](#).