

CTRP6 antibody

Cat. No. GTX85668

Host	Rabbit
Clonality	Polyclonal
Isotype	IgG
Applications	WB, IHC-P, ELISA
Reactivity	Human, Mouse, Rat

Package
50 µg

Applications

Application Note

*Optimal dilutions/concentrations should be determined by the researcher.

Suggested dilution	Recommended dilution
WB	1 µg/ml
IHC-P	10 µg/ml
ELISA	Assay dependent

Not tested in other applications.

Calculated MW 29 kDa. ([Note](#))

Properties

Form	Liquid
Buffer	PBS
Preservative	0.02% Sodium azide
Storage	Store as concentrated solution. Centrifuge briefly prior to opening vial. For short-term storage (1-2 weeks), store at 4°C. For long-term storage, aliquot and store at -20°C or below. Avoid multiple freeze-thaw cycles.
Concentration	1 mg/ml (Please refer to the vial label for the specific concentration.)
Immunogen	A 15 amino acid synthetic peptide near the center of human CTRP6. The immunogen is located within amino acids 80 - 130 of CTRP6.
Purification	Purified by antigen-affinity chromatography
Conjugation	Unconjugated

Note

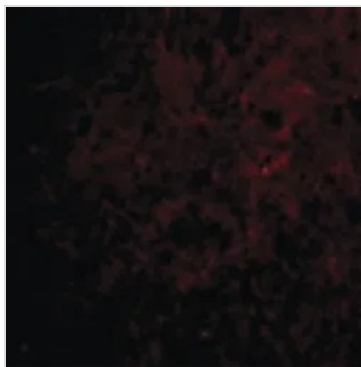
For laboratory research use only. Not for any clinical, therapeutic, or diagnostic use in humans or animals. Not for animal or human consumption.

Purchasers shall not, and agree not to enable third parties to, analyze, copy, reverse engineer or otherwise attempt to determine the structure or sequence of the product.



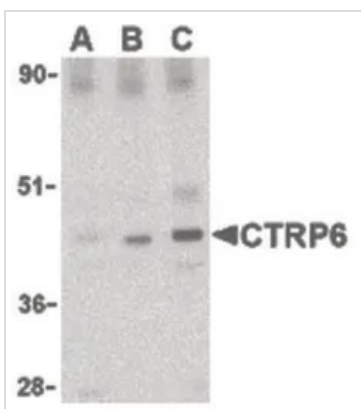
For full product information, images and publications, please visit our [website](#).

DATA IMAGES



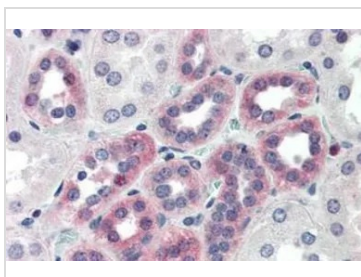
GTX85668 IHC-P Image

IHC-P analysis of human brain tissue using GTX85668 CTRP6 antibody.
Dilution : 20 µg/ml



GTX85668 WB Image

WB analysis of mouse brain cell lysate using GTX85668 CTRP6 antibody.
Dilution : 0.5 µg/mL (Lane A), 1 µg/mL (Lane B), and 2 µg/mL (Lane C)



GTX85668 IHC-P Image

IHC-P analysis of human kidney tissue using GTX85668 CTRP6 antibody.
Antigen retrieval : Heat-induced antigen retrieval
Dilution : 10 µg/ml



For full product information, images and publications, please visit our [website](#).