

CTRP5 antibody

Cat. No. GTX85671

Host	Rabbit
Clonality	Polyclonal
Isotype	IgG
Applications	WB, IHC-P, ELISA
Reactivity	Human

Package
50 µg

Applications

Application Note

*Optimal dilutions/concentrations should be determined by the researcher.

Suggested dilution	Recommended dilution
WB	1 - 4 µg/ml
IHC-P	5 µg/ml
ELISA	Assay dependent

Not tested in other applications.

Properties

Form	Liquid
Buffer	PBS
Preservative	0.02% Sodium azide
Storage	Store as concentrated solution. Centrifuge briefly prior to opening vial. For short-term storage (1-2 weeks), store at 4°C. For long-term storage, aliquot and store at -20°C or below. Avoid multiple freeze-thaw cycles.
Concentration	1 mg/ml (Please refer to the vial label for the specific concentration.)
Immunogen	A 15 amino acid synthetic peptide near the center of human CTRP5. The immunogen is located within amino acids 90 - 140 of CTRP5.
Purification	Purified by affinity chromatography
Conjugation	Unconjugated

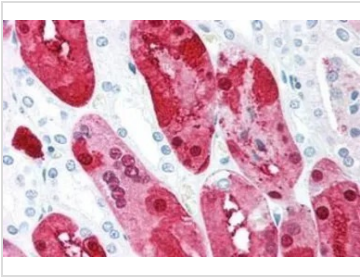
Note For laboratory research use only. Not for any clinical, therapeutic, or diagnostic use in humans or animals. Not for animal or human consumption.

Purchasers shall not, and agree not to enable third parties to, analyze, copy, reverse engineer or otherwise attempt to determine the structure or sequence of the product.



For full product information, images and publications, please visit our [website](#).

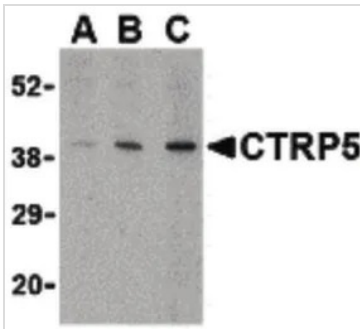
DATA IMAGES

**GTX85671 IHC-P Image**

IHC-P analysis of human kidney tissue using GTX85671 CTRP5 antibody.

Antigen retrieval : Heat-induced antigen retrieval

Dilution : 5 µg/ml

**GTX85671 WB Image**

WB analysis of Caco-2 cell lysate using GTX85671 CTRP5 antibody.

Dilution : 1 µg/mL (Lane A), 2 µg/mL (Lane B), and 4 µg/mL (Lane C)



For full product information, images and publications, please visit our [website](#).