

HTRA3 antibody

Cat. No. GTX85675

Host	Rabbit
Clonality	Polyclonal
Isotype	IgG
Applications	WB, IHC-P
Reactivity	Human, Rat, Monkey

Package
50 µg

Applications

Application Note

*Optimal dilutions/concentrations should be determined by the researcher.

Suggested dilution	Recommended dilution
WB	1 - 3 µg/ml
IHC-P	10 µg/ml

Not tested in other applications.

Calculated MW 49 kDa. ([Note](#))

Properties

Form	Liquid
Buffer	PBS, 0.2% Gelatin
Preservative	0.05% Sodium azide
Storage	Store as concentrated solution. Centrifuge briefly prior to opening vial. For short-term storage (1-2 weeks), store at 4°C. For long-term storage, aliquot and store at -20°C or below. Avoid multiple freeze-thaw cycles.
Concentration	0.5 mg/ml (Please refer to the vial label for the specific concentration.)
Immunogen	Amino acids 273-287 (IVSTAQREGRELGLR) of human HtrA3 were used as immunogen.
Purification	Protein G purified
Conjugation	Unconjugated

Note

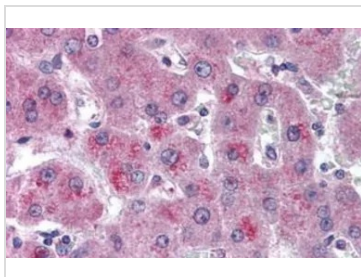
For laboratory research use only. Not for any clinical, therapeutic, or diagnostic use in humans or animals. Not for animal or human consumption.

Purchasers shall not, and agree not to enable third parties to, analyze, copy, reverse engineer or otherwise attempt to determine the structure or sequence of the product.



For full product information, images and publications, please visit our [website](#).

DATA IMAGES

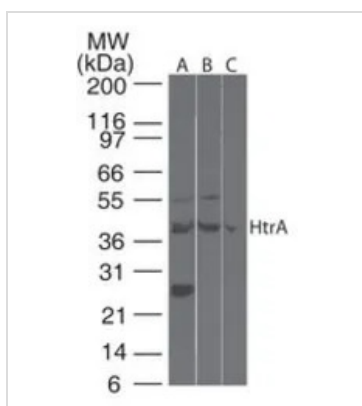


GTX85675 IHC-P Image

IHC-P analysis of human liver tissue using GTX85675 HTRA3 antibody.

Antigen retrieval : Heat-induced antigen retrieval

Dilution : 10 µg/ml



GTX85675 WB Image

WB analysis of rat heart lysate using GTX85675 HTRA3 antibody.

Dilution : 2 µg/ml



For full product information, images and publications, please visit our [website](#).