

HIF3 alpha antibody

Cat. No. GTX85702

Host	Rabbit
Clonality	Polyclonal
Isotype	IgG
Applications	WB, IHC-P, ELISA
Reactivity	Human, Mouse

References (2)

Package

50 µg

Applications

Application Note

*Optimal dilutions/concentrations should be determined by the researcher.

Suggested dilution	Recommended dilution
WB	1:1000-1:8000
IHC-P	Assay dependent
ELISA	1:14000-1:80000

Not tested in other applications.

Calculated MW 73 kDa. ([Note](#))

Properties

Form	Liquid
Buffer	20mM Potassium Phosphate, 150mM NaCl
Preservative	0.01% Sodium azide
Storage	Store as concentrated solution. Centrifuge briefly prior to opening vial. For short-term storage (1-2 weeks), store at 4°C. For long-term storage, aliquot and store at -20°C or below. Avoid multiple freeze-thaw cycles.
Concentration	1.2 mg/ml (Please refer to the vial label for the specific concentration.)
Immunogen	Synthetic peptide corresponding to an internal region near aa 575-600 of mouse Hif3 alpha (Hypoxia Inducible Factor).
Purification	Purified by antigen-affinity chromatography. From serum
Conjugation	Unconjugated

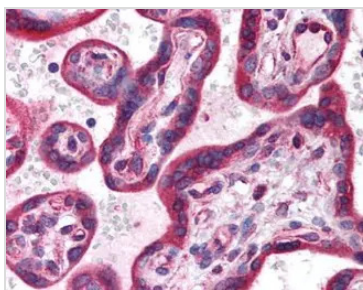
Note

For laboratory research use only. Not for any clinical, therapeutic, or diagnostic use in humans or animals. Not for animal or human consumption.

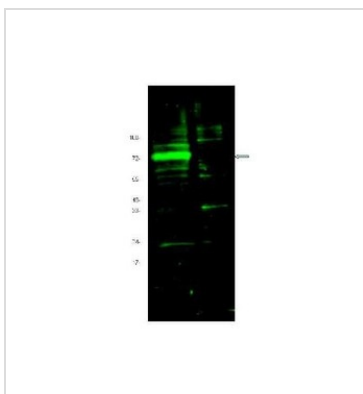
Purchasers shall not, and agree not to enable third parties to, analyze, copy, reverse engineer or otherwise attempt to determine the structure or sequence of the product.

For full product information, images and publications, please visit our [website](#).

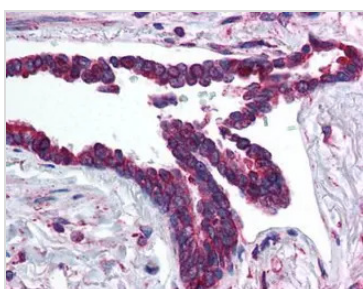
DATA IMAGES

**GTX85702 IHC-P Image**

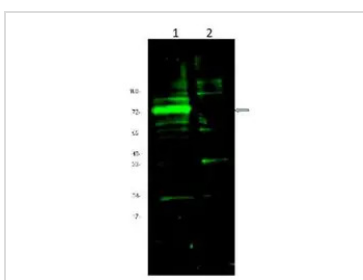
Human Placenta (formalin-fixed, paraffin-embedded) stained with HIF3A antibody (GTX85702) at 5 ug/ml followed by biotinylated goat anti-rabbit IgG secondary antibody LS-D1, alkaline phosphatase-streptavidin and chromogen.

**GTX85702 WB Image**

Anti-Hif Antibody - Western Blot. Western blot of Affinity Purified anti-Hif antibody shows detection of a band ~72 kD corresponding to mouse Hif3a (arrowhead). Approximately 10 ug of a CoCl₂ treated 3T3 cell lysate (lane 1) and control 3T3 cell lysate (lane 2) were separated by 4-20% SDS-PAGE and transferred onto nitrocellulose. Treatment of exponentially growing 3T3 cells with 130 uM CoCl₂ for 6 h at 37 degree C effectively mimics hypoxia. After blocking the membrane was probed overnight at 4C with the primary antibody diluted to 1:1600. The membrane was washed and reacted with a 1:10000 dilution of IRDye800 conjugated Gt-a-Rabbit IgG [H&L] MX (for 45 min at room temperature. IRDye800 fluorescence image was captured using the Odyssey Infrared Imaging System developed by LI-COR. IRDye is a trademark of LI-COR, Inc. Other detection systems will yield similar results.

**GTX85702 IHC-P Image**

Human Lung, Respiratory Epithelium (formalin-fixed, paraffin-embedded) stained with HIF3A antibody (GTX85702) at 5 ug/ml followed by biotinylated goat anti-rabbit IgG secondary antibody LS-D1, alkaline phosphatase-streptavidin and chromogen.

**GTX85702 WB Image**

WB analysis of CoCl₂-treated (lane 1) and untreated (lane 2) NIH-3T3 whole cell lysate using GTX85702 HIF3 alpha antibody.

Loading : 10 µg

Dilution : 1:1600



For full product information, images and publications, please visit our [website](#).