

## CASZ1 antibody

Cat. No. GTX85729

<b>Host</b>	Rabbit
<b>Clonality</b>	Polyclonal
<b>Isotype</b>	IgG
<b>Applications</b>	WB, IHC-P, ELISA
<b>Reactivity</b>	Human, Mouse, Rat, Bovine

Package

25 µg

## Applications

## Application Note

\*Optimal dilutions/concentrations should be determined by the researcher.

Suggested dilution	Recommended dilution
WB	1:1000 - 1:3000
IHC-P	5 µg/ml
ELISA	1:25000 - 1:100000

**Note : Heat induced antigen retrieval in pH 6.0 citrate buffer**

Not tested in other applications.

**Product Note** Expect cross reactivity with multiple isoforms of this protein.

## Properties

<b>Form</b>	Liquid
<b>Buffer</b>	20mM Potassium Phosphate, 150mM NaCl
<b>Preservative</b>	No preservatives
<b>Storage</b>	Store as concentrated solution. Centrifuge briefly prior to opening vial. For short-term storage (1-2 weeks), store at 4°C. For long-term storage, aliquot and store at -20°C or below. Avoid multiple freeze-thaw cycles.
<b>Concentration</b>	1 mg/ml (Please refer to the vial label for the specific concentration.)
<b>Immunogen</b>	Synthetic peptide located between amino acids 1-150 of B3KRV8
<b>Purification</b>	Purified by affinity chromatography
<b>Conjugation</b>	Unconjugated

**Note**

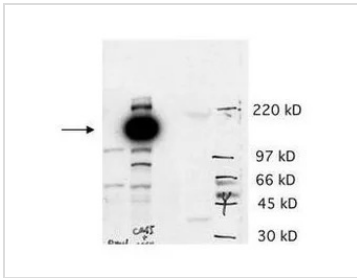
For laboratory research use only. Not for any clinical, therapeutic, or diagnostic use in humans or animals. Not for animal or human consumption.

Purchasers shall not, and agree not to enable third parties to, analyze, copy, reverse engineer or otherwise attempt to determine the structure or sequence of the product.



For full product information, images and publications, please visit our [website](#).

## DATA IMAGES

**GTX85729 WB Image**

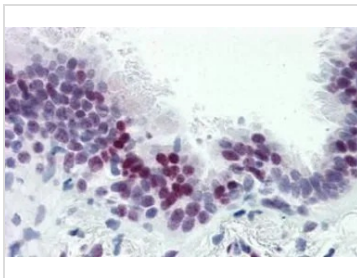
WB analysis of various sample lysates using GTX85729 CAS1 antibody.

Lane 1 : AS cells transfected with empty vector

Lane 2 : AS cells transfected with hCas5

Lane 3 : BE2 cells

Lane 4 : human muscle tissue

**GTX85729 IHC-P Image**

IHC-P analysis of human lung tissue using GTX85729 CAS1 antibody.

Antigen retrieval : Heat-induced antigen retrieval

Dilution : 5 µg/ml



For full product information, images and publications, please visit our [website](#).