

# NRM antibody

**Cat. No. GTX85768**

<b>Host</b>	Rabbit
<b>Clonality</b>	Polyclonal
<b>Isotype</b>	IgG
<b>Applications</b>	WB, IHC-P
<b>Reactivity</b>	Human, Mouse

**Package**  
50 µg

## Applications

### Application Note

\*Optimal dilutions/concentrations should be determined by the researcher.

Suggested dilution	Recommended dilution
WB	1 - 3 µg/ml
IHC-P	5 µg/ml

Not tested in other applications.

**Calculated MW** 29 kDa. ( [Note](#) )

## Properties

<b>Form</b>	Liquid
<b>Buffer</b>	PBS, 0.2% Gelatin
<b>Preservative</b>	0.05% Sodium azide
<b>Storage</b>	Store as concentrated solution. Centrifuge briefly prior to opening vial. For short-term storage (1-2 weeks), store at 4°C. For long-term storage, aliquot and store at -20°C or below. Avoid multiple freeze-thaw cycles.
<b>Concentration</b>	0.5 mg/ml (Please refer to the vial label for the specific concentration.)
<b>Immunogen</b>	A portion of amino acids 200-250 of human Nurim.
<b>Purification</b>	Protein G purified
<b>Conjugation</b>	Unconjugated

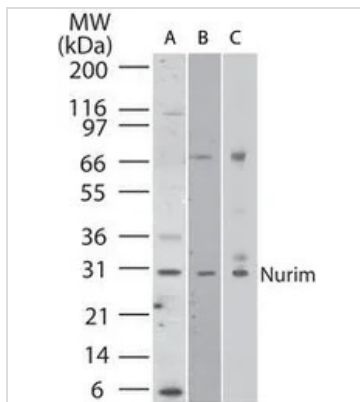
### Note

For laboratory research use only. Not for any clinical, therapeutic, or diagnostic use in humans or animals. Not for animal or human consumption.

Purchasers shall not, and agree not to enable third parties to, analyze, copy, reverse engineer or otherwise attempt to determine the structure or sequence of the product.

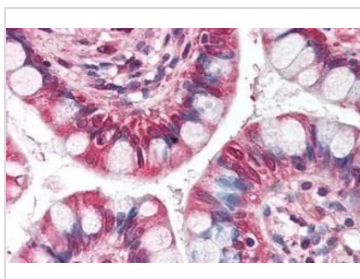


For full product information, images and publications, please visit our [website](#).

**DATA IMAGES**

**GTx85768 WB Image**

WB analysis of A) HeLa, B) NIH 3T3, and C) PC3 cell lysate using GTx85768 NRM antibody.

Dilution : 2 µg/ml


**GTx85768 IHC-P Image**

IHC-P analysis of human small intestine tissue using GTx85768 NRM antibody.

Antigen retrieval : Heat-induced antigen retrieval

Dilution : 5 µg/ml



For full product information, images and publications, please visit our [website](https://www.genetex.com).