

## THRAP3 antibody

Cat. No. GTX85787

Host	Rabbit
Clonality	Polyclonal
Isotype	IgG
Applications	WB, IHC-P
Reactivity	Human, Mouse, Rat, Bovine, Dog, Monkey, Horse, Xenopus

## Package

50 µg

## Applications

## Application Note

\*Optimal dilutions/concentrations should be determined by the researcher.

Suggested dilution	Recommended dilution
WB	0.1 - 1 µg/ml
IHC-P	10 µg/ml

Not tested in other applications.

Calculated MW 109 kDa. ([Note](#))

## Properties

Form	Liquid
Buffer	PBS, 0.05% BSA
Preservative	0.05% Sodium azide
Storage	Store as concentrated solution. Centrifuge briefly prior to opening vial. For short-term storage (1-2 weeks), store at 4°C. For long-term storage, aliquot and store at -20°C or below. Avoid multiple freeze-thaw cycles.
Concentration	0.5 mg/ml (Please refer to the vial label for the specific concentration.)
Immunogen	A portion of amino acids 930-955 of human Thyroid hormone receptor associated protein 3.
Purification	Purified by affinity chromatography
Conjugation	Unconjugated

## Note

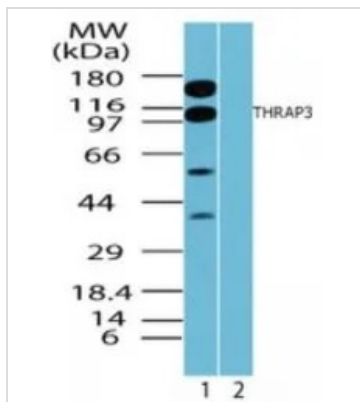
For laboratory research use only. Not for any clinical, therapeutic, or diagnostic use in humans or animals. Not for animal or human consumption.

Purchasers shall not, and agree not to enable third parties to, analyze, copy, reverse engineer or otherwise attempt to determine the structure or sequence of the product.



For full product information, images and publications, please visit our [website](#).

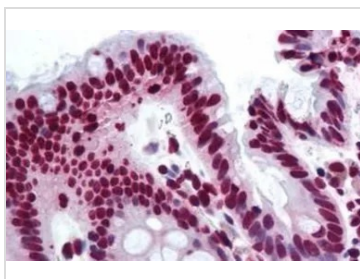
## DATA IMAGES



### GTX85787 WB Image

WB analysis of HeLa cell lysate in the 1) absence and 2) presence of immunizing peptide using GTX85787 THRAP3 antibody.

Dilution : 0.1 µg/ml



### GTX85787 IHC-P Image

IHC-P analysis of human colon tissue using GTX85787 THRAP3 antibody.

Antigen retrieval : Heat-induced antigen retrieval

Dilution : 10 µg/ml



For full product information, images and publications, please visit our [website](https://www.genetex.com).