

# TGM4 antibody [AT1H1]

**Cat. No. GTX85819**

<b>Host</b>	Mouse
<b>Clonality</b>	Monoclonal
<b>Isotype</b>	IgG2b
<b>Applications</b>	WB, IHC-P, ELISA
<b>Reactivity</b>	Human

**Package**

25 µg

## Applications

### Application Note

\*Optimal dilutions/concentrations should be determined by the researcher.

Suggested dilution	Recommended dilution
WB	Assay dependent
IHC-P	Assay dependent
ELISA	Assay dependent

Not tested in other applications.

**Calculated MW** 77 kDa. ( [Note](#) )

## Properties

<b>Form</b>	Liquid
<b>Buffer</b>	PBS pH 7.4, 0.1% sodium azide
<b>Storage</b>	Store as concentrated solution. Centrifuge briefly prior to opening vial. For short-term storage (1-2 weeks), store at 4°C. For long-term storage, aliquot and store at -20°C or below. Avoid multiple freeze-thaw cycles.
<b>Concentration</b>	Batch dependent (Please refer to the vial label for the specific concentration.)
<b>Immunogen</b>	Recombinant human TGM4 (421-565aa) purified from E. coli. NCBI Accession No.: NP_003232.
<b>Conjugation</b>	Unconjugated

### Note

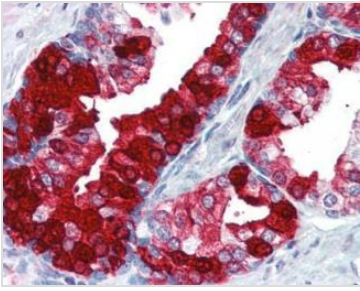
For laboratory research use only. Not for any clinical, therapeutic, or diagnostic use in humans or animals. Not for animal or human consumption.

Purchasers shall not, and agree not to enable third parties to, analyze, copy, reverse engineer or otherwise attempt to determine the structure or sequence of the product.



For full product information, images and publications, please visit our [website](#).

## DATA IMAGES



### GTX85819 IHC-P Image

Human Prostate (formalin-fixed, paraffin-embedded) stained with TGM4 antibody (GTX85819) at 5 ug/ml followed by biotinylated anti-mouse IgG secondary antibody LS-D2, alkaline phosphatase-streptavidin and chromogen.



For full product information, images and publications, please visit our [website](#).