

RAD23B antibody

Cat. No. GTX85831

Host	Goat
Clonality	Polyclonal
Isotype	IgG
Applications	WB, IHC-P, ELISA
Reactivity	Human

Package

25 µg

Applications

Application Note

*Optimal dilutions/concentrations should be determined by the researcher.

Suggested dilution	Recommended dilution
WB	1:500 - 1:2000
IHC-P	2.5 µg/ml
ELISA	1:2000 - 1:10000

Note : Heat induced antigen retrieval in pH 6.0 citrate buffer

Not tested in other applications.

Calculated MW 43 kDa. ([Note](#))

Properties

Form	Liquid
Buffer	20mM Potassium Phosphate, 150mM NaCl
Preservative	0.01% Sodium azide
Storage	Store as concentrated solution. Centrifuge briefly prior to opening vial. For short-term storage (1-2 weeks), store at 4°C. For long-term storage, aliquot and store at -20°C or below. Avoid multiple freeze-thaw cycles.
Concentration	1 mg/ml (Please refer to the vial label for the specific concentration.)
Immunogen	Synthetic peptide from human RAD23B.
Purification	Purified by affinity chromatography
Conjugation	Unconjugated

Note

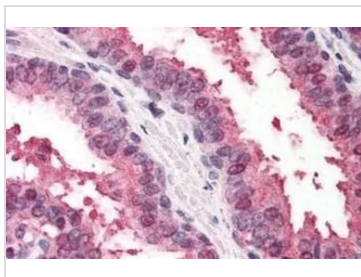
For laboratory research use only. Not for any clinical, therapeutic, or diagnostic use in humans or animals. Not for animal or human consumption.

Purchasers shall not, and agree not to enable third parties to, analyze, copy, reverse engineer or otherwise attempt to determine the structure or sequence of the product.



For full product information, images and publications, please visit our [website](#).

DATA IMAGES

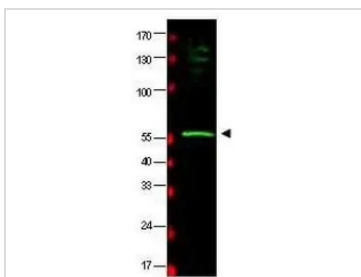


GTX85831 IHC-P Image

IHC-P analysis of human prostate tissue using GTX85831 RAD23B antibody.

Antigen retrieval : Heat-induced antigen retrieval

Dilution : 5 µg/ml



GTX85831 WB Image

WB analysis of HeLa whole cell lysate using GTX85831 RAD23B antibody.

Dilution : 1:500



For full product information, images and publications, please visit our [website](#).