

IRF7 antibody [3D9]

Cat. No. GTX85864

Host	Mouse
Clonality	Monoclonal
Isotype	IgG1
Applications	WB, IHC-P, ELISA
Reactivity	Human

Package
50 µg

Applications

Application Note

*Optimal dilutions/concentrations should be determined by the researcher.

Suggested dilution	Recommended dilution
WB	1:1000 - 1:2000
IHC-P	20 µg/ml
ELISA	Assay dependent

Note : Heat induced antigen retrieval in pH 6.0 citrate buffer

Not tested in other applications.

Calculated MW 54 kDa. ([Note](#))

Properties

Form	Liquid
Buffer	PBS
Preservative	0.1% Sodium azide
Storage	Store as concentrated solution. Centrifuge briefly prior to opening vial. For short-term storage (1-2 weeks), store at 4°C. For long-term storage, aliquot and store at -20°C or below. Avoid multiple freeze-thaw cycles.
Concentration	1 mg/ml (Please refer to the vial label for the specific concentration.)
Immunogen	Recombinant human IRF7 (1-150aa) purified from E. coli.
Purification	Protein G purified
Conjugation	Unconjugated

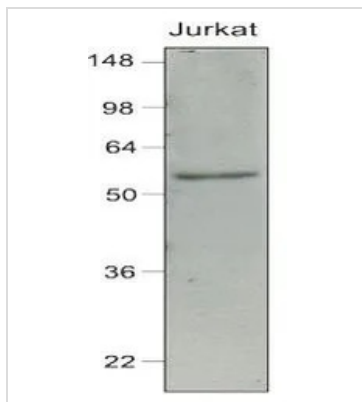
Note

For laboratory research use only. Not for any clinical, therapeutic, or diagnostic use in humans or animals. Not for animal or human consumption.

Purchasers shall not, and agree not to enable third parties to, analyze, copy, reverse engineer or otherwise attempt to determine the structure or sequence of the product.

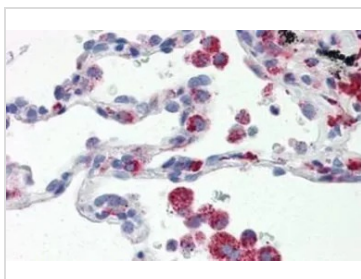


For full product information, images and publications, please visit our [website](#).

DATA IMAGES

GTX85864 WB Image

WB analysis of Jurkat (40 ug) cell lysate using GTX85864 IRF7 antibody [3D9].

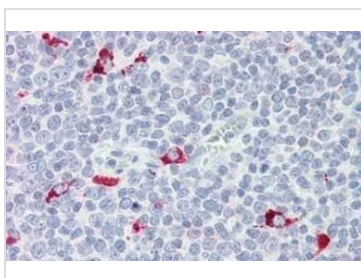
Dilution : 1:1000


GTX85864 IHC-P Image

IHC-P analysis of human lung tissue using GTX85864 IRF7 antibody [3D9].

Antigen retrieval : Heat-induced antigen retrieval

Dilution : 20 µg/ml


GTX85864 IHC-P Image

IHC-P analysis of human tonsil tissue using GTX85864 IRF7 antibody [3D9].

Antigen retrieval : Heat-induced antigen retrieval

Dilution : 20 µg/ml



For full product information, images and publications, please visit our [website](https://www.genetex.com).