

IL7 Receptor alpha antibody

Cat. No. GTX85865

Host	Rabbit
Clonality	Polyclonal
Isotype	IgG
Applications	WB, IHC-P, ELISA
Reactivity	Human, Mouse, Rat

Package
25 µg

Applications

Application Note

*Optimal dilutions/concentrations should be determined by the researcher.

Suggested dilution	Recommended dilution
WB	1:1000 - 1:10000
IHC-P	5 µg/ml
ELISA	1:500 - 1:50000

Note : Heat induced antigen retrieval in pH 6.0 citrate buffer

Not tested in other applications.

Calculated MW 52 kDa. ([Note](#))

Properties

Form	Liquid
Buffer	20mM Potassium Phosphate, 150mM NaCl
Preservative	0.01% Sodium azide
Storage	Store as concentrated solution. Centrifuge briefly prior to opening vial. For short-term storage (1-2 weeks), store at 4°C. For long-term storage, aliquot and store at -20°C or below. Avoid multiple freeze-thaw cycles.
Concentration	1 mg/ml (Please refer to the vial label for the specific concentration.)
Immunogen	Synthetic peptide corresponding to a region near the C-terminus of mouse IL-7 protein
Purification	Purified by affinity chromatography
Conjugation	Unconjugated

Note

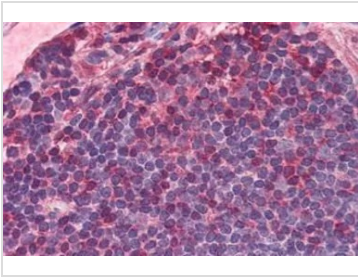
For laboratory research use only. Not for any clinical, therapeutic, or diagnostic use in humans or animals. Not for animal or human consumption.

Purchasers shall not, and agree not to enable third parties to, analyze, copy, reverse engineer or otherwise attempt to determine the structure or sequence of the product.



For full product information, images and publications, please visit our [website](#).

DATA IMAGES

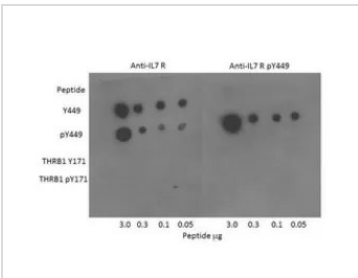


GTX85865 IHC-P Image

IHC-P analysis of human colon, malt tissue using GTX85865 IL7 Receptor alpha antibody.

Antigen retrieval : Heat-induced antigen retrieval

Dilution : 5 µg/ml



GTX85865 WB Image

WB analysis of IL-7 Receptor total and pY449 forms of the immunizing peptide and THRB1t total and pY171 forms as controls using GTX85865 IL7 Receptor alpha antibody.

Dilution : 1:400



For full product information, images and publications, please visit our [website](#).