

Syntaxin 2 antibody

Cat. No. GTX85883

Host	Rabbit
Clonality	Polyclonal
Isotype	IgG
Applications	WB, IHC-P, IP
Reactivity	Human, Mouse, Rat, Rabbit, Sheep, Drosophila, Bovine, Hamster, Chicken, Pig, Monkey, Xenopus, Insect

Package

25 µg

Applications

Application Note

*Optimal dilutions/concentrations should be determined by the researcher.

Suggested dilution	Recommended dilution
WB	1 µg/ml
IHC-P	10 µg/ml
IP	10 µg/ml

Note : Heat induced antigen retrieval in pH 6.0 citrate buffer

Not tested in other applications.

Calculated MW 33 kDa. ([Note](#))

Properties

Form	Liquid
Buffer	PBS, 50% Glycerol
Preservative	0.09% Sodium azide
Storage	Store as concentrated solution. Centrifuge briefly prior to opening vial. For short-term storage (1-2 weeks), store at 4°C. For long-term storage, aliquot and store at -20°C or below. Avoid multiple freeze-thaw cycles.
Concentration	1 mg/ml (Please refer to the vial label for the specific concentration.)
Immunogen	Rat syntaxin 2 synthetic peptide, corresponding to amino acid residues 1-19, conjugated to KLH.
Purification	Purified by affinity chromatography
Conjugation	Unconjugated



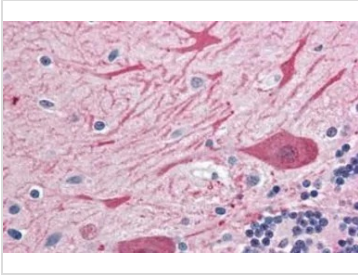
For full product information, images and publications, please visit our [website](#).

For laboratory research use only. Not for any clinical, therapeutic, or diagnostic use in humans or animals. Not for animal or human consumption.

Note

Purchasers shall not, and agree not to enable third parties to, analyze, copy, reverse engineer or otherwise attempt to determine the structure or sequence of the product.

DATA IMAGES

**GTX85883 IHC-P Image**

IHC-P analysis of human brain, cerebellum tissue using GTX85883 Syntaxin 2 antibody.

Antigen retrieval : Heat-induced antigen retrieval

Dilution : 10 µg/ml



For full product information, images and publications, please visit our [website](#).