

## CDC25A (phospho Ser178) antibody

Cat. No. GTX86031

Host	Rabbit
Clonality	Polyclonal
Isotype	IgG
Applications	WB, IHC-P
Reactivity	Human

Package  
100 µg

## Applications

## Application Note

\*Optimal dilutions/concentrations should be determined by the researcher.

Suggested dilution	Recommended dilution
WB	1:500~1:1000
IHC-P	1:50~1:100

Not tested in other applications.

Calculated MW 59 kDa. ( [Note](#) )

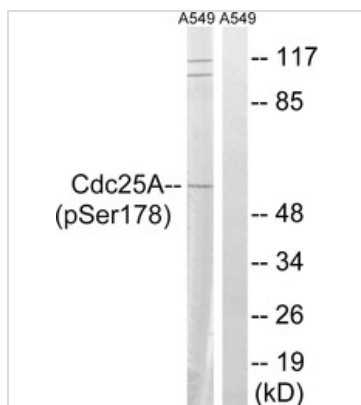
## Properties

Form	Liquid
Buffer	PBS, 150mM NaCl, 50% Glycerol
Preservative	0.02% Sodium azide
Storage	Store as concentrated solution. Centrifuge briefly prior to opening vial. For short-term storage (1-2 weeks), store at 4°C. For long-term storage, aliquot and store at -20°C or below. Avoid multiple freeze-thaw cycles.
Concentration	Batch dependent (Please refer to the vial label for the specific concentration.)
Immunogen	The antiserum was produced against synthesized peptide derived from human CDC25A (144-193).
Purification	Purified by antigen-affinity chromatography. Non-phospho peptide was removed by chromatography using corresponding non-phospho peptide. From serum
Conjugation	Unconjugated
Note	For laboratory use only. Not for any clinical, therapeutic, or diagnostic use in humans or animals. Not for animal or human consumption.



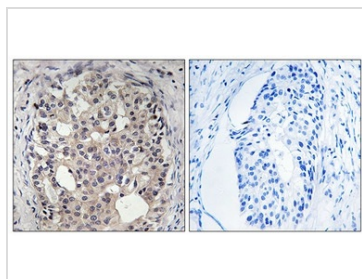
For full product information, images and publications, please visit our [website](#).

## DATA IMAGES



### GTx86031 WB Image

WB analysis of A549 cells treated with UV (15mins) lysate using GTx86031 CDC25A (phospho Ser178) antibody. The lane on the right is blocked with the synthesized peptide.



### GTx86031 IHC-P Image

IHC-P analysis of human breast carcinoma tissue using GTx86031 CDC25A (phospho Ser178) antibody. The picture on the right is blocked with the synthesized peptide.



For full product information, images and publications, please visit our [website](#).