

## 14-3-3 beta/zeta (phospho Ser186/Ser184) antibody

Cat. No. GTX86822

Host	Rabbit
Clonality	Polyclonal
Isotype	IgG
Applications	WB
Reactivity	Human, Mouse, Rat

Package  
100 µl

## Applications

## Application Note

\*Optimal dilutions/concentrations should be determined by the researcher.

Suggested dilution	Recommended dilution
WB	1:500-1:1000

Not tested in other applications.

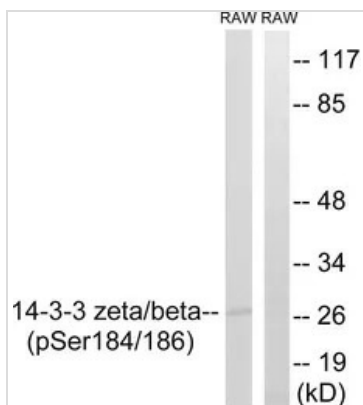
## Properties

Form	Liquid
Buffer	PBS, 150mM NaCl, 50% Glycerol
Preservative	0.02% Sodium azide
Storage	Store as concentrated solution. Centrifuge briefly prior to opening vial. For short-term storage (1-2 weeks), store at 4°C. For long-term storage, aliquot and store at -20°C or below. Avoid multiple freeze-thaw cycles.
Concentration	Batch dependent (Please refer to the vial label for the specific concentration.)
Immunogen	Synthesized peptide derived from human 14-3-3 beta/zeta around the phosphorylation site of Ser186/184 (151-200).
Purification	Purified by sequential chromatography on phospho-peptide and non-phospho-peptide affinity columns From serum
Conjugation	Unconjugated
Note	<p>For laboratory research use only. Not for any clinical, therapeutic, or diagnostic use in humans or animals. Not for animal or human consumption.</p> <p>Purchasers shall not, and agree not to enable third parties to, analyze, copy, reverse engineer or otherwise attempt to determine the structure or sequence of the product.</p>



For full product information, images and publications, please visit our [website](#).

## DATA IMAGES



### GTx86822 WB Image

WB analysis of RAW264.7 treated with 15 mins UV lysates using GTx86822 14-3-3 beta/zeta (phospho Ser186/Ser184) antibody. The lane on the right is blocked with the phospho peptide.



For full product information, images and publications, please visit our [website](#).