

## alpha Fodrin (cleaved Asp1185) antibody

**Cat. No. GTX86886**

<b>Host</b>	Rabbit
<b>Clonality</b>	Polyclonal
<b>Isotype</b>	IgG
<b>Applications</b>	WB
<b>Reactivity</b>	Human

**Package**  
100 µg

## Applications

**Application Note**

\*Optimal dilutions/concentrations should be determined by the researcher.

Suggested dilution	Recommended dilution
WB	1:500~1:1000

Not tested in other applications.

**Calculated MW** 285 kDa. ([Note](#))

**Product Note** alpha Fodrin (cleaved Asp1185) antibody detects endogenous levels of fragment of activated alpha Fodrin / SPTA2 resulting from cleavage adjacent to Asp1185.

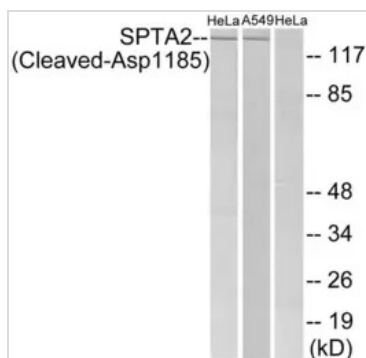
## Properties

<b>Form</b>	Liquid
<b>Buffer</b>	PBS, 150mM NaCl, 50% Glycerol
<b>Preservative</b>	0.02% Sodium azide
<b>Storage</b>	Store as concentrated solution. Centrifuge briefly prior to opening vial. For short-term storage (1-2 weeks), store at 4°C. For long-term storage, aliquot and store at -20°C or below. Avoid multiple freeze-thaw cycles.
<b>Concentration</b>	Batch dependent (Please refer to the vial label for the specific concentration.)
<b>Immunogen</b>	The antiserum was produced against synthesized peptide derived from human alpha Fodrin (1136-1185).
<b>Purification</b>	Purified by antigen-affinity chromatography From serum
<b>Conjugation</b>	Unconjugated
<b>Note</b>	For laboratory use only. Not for any clinical, therapeutic, or diagnostic use in humans or animals. Not for animal or human consumption.



For full product information, images and publications, please visit our [website](#).

## DATA IMAGES



### GTX86886 WB Image

WB analysis of HeLa and A549 cells treated with etoposide 25uM (24h) lysate using GTX86886 alpha Fodrin (cleaved Asp1185) antibody. The lane on the right is blocked with the synthesized peptide.



For full product information, images and publications, please visit our [website](#).