

Bad (cleaved Asp71) antibody

Cat. No. GTX86887

| | |
|-------------|------------|
| Host | Rabbit |
| Clonality | Polyclonal |
| Isotype | IgG |
| Application | WB, IHC-P |
| Reactivity | Human |

Package
100 µg

APPLICATION

Application Note

*Optimal dilutions/concentrations should be determined by the researcher.

| Suggested dilution | Recommended dilution |
|--------------------|----------------------|
| WB | 1:500~1:1000 |
| IHC-P | 1:50~1:100 |

Not tested in other applications.

Calculated MW 22 kDa. ([Note](#))

Product Note Bad (cleaved Asp71) antibody detects endogenous levels of fragment of activated BAD resulting from cleavage adjacent to Asp71.

PROPERTIES

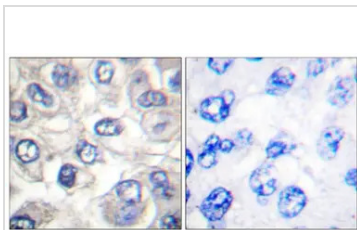
| | |
|---------------|--|
| Form | Liquid |
| Buffer | PBS, 150mM NaCl, 50% Glycerol |
| Preservative | 0.02% Sodium azide |
| Storage | Store as concentrated solution. Centrifuge briefly prior to opening vial. For short-term storage (1-2 weeks), store at 4°C. For long-term storage, aliquot and store at -20°C or below. Avoid multiple freeze-thaw cycles. |
| Concentration | Batch dependent (Please refer to the vial label for the specific concentration.) |
| Immunogen | The antiserum was produced against synthesized peptide derived from mouse Bad (21-70). |
| Purification | Purified by antigen-affinity chromatography From serum |
| Conjugation | Unconjugated |
| Note | For laboratory use only. Not for any clinical, therapeutic, or diagnostic use in humans or animals. Not for animal or human consumption. |



For full product information, images and publications, please visit our [website](#).

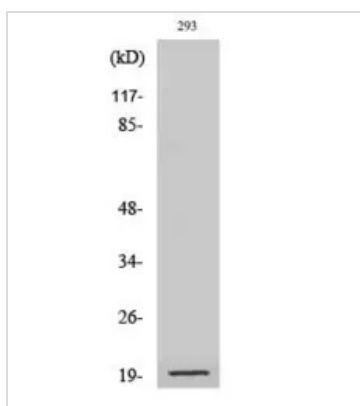
Date 2024 / 05 / 18 Page 1 of 2

DATA IMAGES



GTX86887 IHC-P Image

IHC-P analysis of human breast carcinoma tissue using GTX86887 Bad (cleaved Asp71) antibody. The picture on the right is blocked with the synthesized peptide.



GTX86887 WB Image

WB analysis of 293 cell lysates using GTX86887 Bad (cleaved Asp71) antibody.



For full product information, images and publications, please visit our [website](https://www.genetex.com).