

Lamin A (cleaved Asp230) antibody

Cat. No. GTX86913

Host	Rabbit
Clonality	Polyclonal
Isotype	IgG
Applications	WB, IHC-P
Reactivity	Human

Package
100 µg

Applications

Application Note

*Optimal dilutions/concentrations should be determined by the researcher.

Suggested dilution	Recommended dilution
WB	1:500~1:1000
IHC-P	1:50~1:100

Not tested in other applications.

Calculated MW 74 kDa. ([Note](#))

Product Note

Lamin A (cleaved Asp230) antibody detects endogenous levels of fragment of activated Lamin A resulting from cleavage adjacent to Asp230.

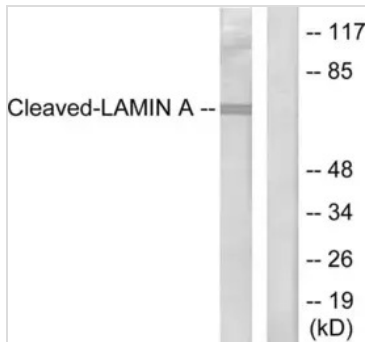
Properties

Form	Liquid
Buffer	PBS, 150mM NaCl, 50% Glycerol
Preservative	0.02% Sodium azide
Storage	Store as concentrated solution. Centrifuge briefly prior to opening vial. For short-term storage (1-2 weeks), store at 4°C. For long-term storage, aliquot and store at -20°C or below. Avoid multiple freeze-thaw cycles.
Concentration	Batch dependent (Please refer to the vial label for the specific concentration.)
Immunogen	The antiserum was produced against synthesized peptide derived from human Lamin A (181-230).
Purification	Purified by antigen-affinity chromatography From serum
Conjugation	Unconjugated
Note	For laboratory use only. Not for any clinical, therapeutic, or diagnostic use in humans or animals. Not for animal or human consumption.



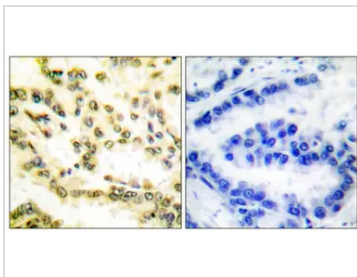
For full product information, images and publications, please visit our [website](#).

DATA IMAGES



GTx86913 WB Image

WB analysis of HeLa cells treated with Etoposide 25uM (60mins) lysate using GTx86913 Lamin A (cleaved Asp230) antibody. The lane on the right is blocked with the synthesized peptide.



GTx86913 IHC-P Image

IHC-P analysis of human lung carcinoma tissue using GTx86913 Lamin A (cleaved Asp230) antibody. The picture on the right is blocked with the synthesized peptide.



For full product information, images and publications, please visit our [website](https://www.genetex.com).