

## Cathepsin Z (cleaved Leu62) antibody

Cat. No. GTX86917

Host	Rabbit
Clonality	Polyclonal
Isotype	IgG
Applications	WB
Reactivity	Monkey

Package  
100 µg

## Applications

## Application Note

\*Optimal dilutions/concentrations should be determined by the researcher.

Suggested dilution	Recommended dilution
--------------------	----------------------

WB	1:500~1:1000
----	--------------

Not tested in other applications.

Calculated MW	34 kDa. ( <a href="#">Note</a> )
---------------	----------------------------------

Product Note	Cathepsin Z (cleaved Leu62) antibody detects endogenous levels of fragment of activated CATZ resulting from cleavage adjacent to Leu62.
--------------	---

## Properties

Form	Liquid
------	--------

Buffer	PBS, 150mM NaCl, 50% Glycerol
--------	-------------------------------

Preservative	0.02% Sodium azide
--------------	--------------------

Storage	Store as concentrated solution. Centrifuge briefly prior to opening vial. For short-term storage (1-2 weeks), store at 4°C. For long-term storage, aliquot and store at -20°C or below. Avoid multiple freeze-thaw cycles.
---------	--

Concentration	Batch dependent (Please refer to the vial label for the specific concentration.)
---------------	--

Immunogen	The antiserum was produced against synthesized peptide derived from human Cathepsin Z (43-92).
-----------	--

Purification	Purified by antigen-affinity chromatography From serum
--------------	---

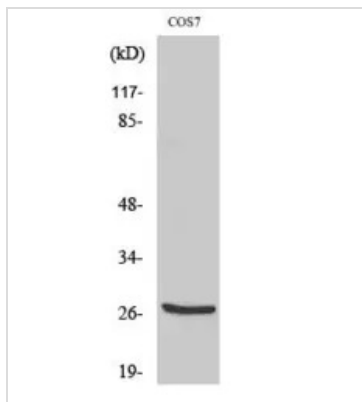
Conjugation	Unconjugated
-------------	--------------

Note	For laboratory use only. Not for any clinical, therapeutic, or diagnostic use in humans or animals. Not for animal or human consumption.
------	--



For full product information, images and publications, please visit our [website](#).

## DATA IMAGES

**GTX86917 WB Image**

WB analysis of COS7 cells treated with etoposide using GTX86917 Cathepsin Z (cleaved Leu62) antibody.



For full product information, images and publications, please visit our [website](#).