

MMP15 (cleaved Tyr132) antibody

Cat. No. GTX86936

| | |
|--------------|------------|
| Host | Rabbit |
| Clonality | Polyclonal |
| Isotype | IgG |
| Applications | WB |
| Reactivity | Monkey |

Package
100 µg

Applications

Application Note

*Optimal dilutions/concentrations should be determined by the researcher.

| Suggested dilution | Recommended dilution |
|--------------------|----------------------|
| WB | 1:500~1:1000 |

Not tested in other applications.

Calculated MW 76 kDa. ([Note](#))**Product Note** MMP15 (cleaved Tyr132) antibody detects endogenous levels of fragment of activated MMP15 resulting from cleavage adjacent to Tyr132.

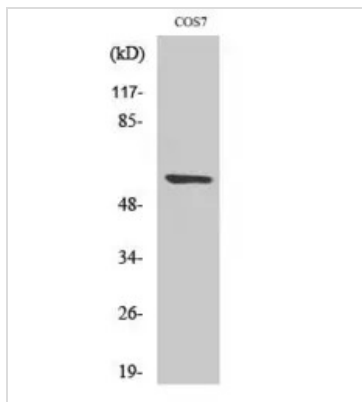
Properties

| | |
|---------------|--|
| Form | Liquid |
| Buffer | PBS, 150mM NaCl, 50% Glycerol |
| Preservative | 0.02% Sodium azide |
| Storage | Store as concentrated solution. Centrifuge briefly prior to opening vial. For short-term storage (1-2 weeks), store at 4°C. For long-term storage, aliquot and store at -20°C or below. Avoid multiple freeze-thaw cycles. |
| Concentration | Batch dependent (Please refer to the vial label for the specific concentration.) |
| Immunogen | The antiserum was produced against synthesized peptide derived from human MMP15 (113-162). |
| Purification | Purified by antigen-affinity chromatography From serum |
| Conjugation | Unconjugated |
| Note | For laboratory use only. Not for any clinical, therapeutic, or diagnostic use in humans or animals. Not for animal or human consumption. |



For full product information, images and publications, please visit our [website](#).

DATA IMAGES



GTx86936 WB Image

WB analysis of COS7 cells treated with etoposide 25uM 1h using GTx86936 MMP15 (cleaved Tyr132) antibody.



For full product information, images and publications, please visit our [website](#).