

## F2RL3 / PAR-4 (cleaved Gly48) antibody

**Cat. No. GTX86937**

<b>Host</b>	Rabbit
<b>Clonality</b>	Polyclonal
<b>Isotype</b>	IgG
<b>Applications</b>	WB
<b>Reactivity</b>	Mouse

**Package**  
100 µg

### Applications

#### Application Note

\*Optimal dilutions/concentrations should be determined by the researcher.

Suggested dilution	Recommended dilution
WB	1:500~1:1000

Not tested in other applications.

**Calculated MW** 41 kDa. ( [Note](#) )

**Product Note** F2RL3 / PAR-4 (cleaved Gly48) antibody detects endogenous levels of fragment of activated PAR4 resulting from cleavage adjacent to Gly48.

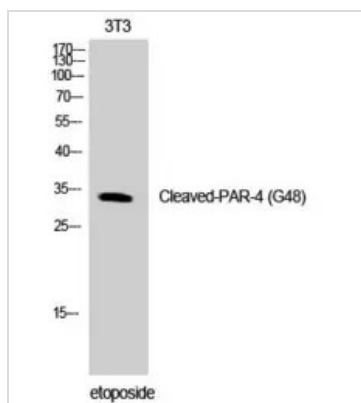
### Properties

<b>Form</b>	Liquid
<b>Buffer</b>	PBS, 150mM NaCl, 50% Glycerol
<b>Preservative</b>	0.02% Sodium azide
<b>Storage</b>	Store as concentrated solution. Centrifuge briefly prior to opening vial. For short-term storage (1-2 weeks), store at 4°C. For long-term storage, aliquot and store at -20°C or below. Avoid multiple freeze-thaw cycles.
<b>Concentration</b>	Batch dependent (Please refer to the vial label for the specific concentration.)
<b>Immunogen</b>	The antiserum was produced against synthesized peptide derived from human F2RL3 / PAR-4 (29-78).
<b>Purification</b>	Purified by antigen-affinity chromatography From serum
<b>Conjugation</b>	Unconjugated
<b>Note</b>	For laboratory use only. Not for any clinical, therapeutic, or diagnostic use in humans or animals. Not for animal or human consumption.



For full product information, images and publications, please visit our [website](#).

## DATA IMAGES



### GTX86937 WB Image

WB analysis of NIH/3T3 cells treated with etoposide using GTX86937 F2RL3 / PAR-4 (cleaved Gly48) antibody.



For full product information, images and publications, please visit our [website](#).