

CBP (acetyl Lys1535) antibody

Cat. No. GTX86958

Host	Rabbit
Clonality	Polyclonal
Isotype	IgG
Applications	IHC-P
Reactivity	Human

Package
100 µg

Applications

Application Note

*Optimal dilutions/concentrations should be determined by the researcher.

Suggested dilution	Recommended dilution
IHC-P	1:50~1:100

Not tested in other applications.

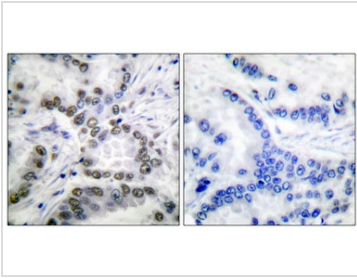
Properties

Form	Liquid
Buffer	PBS, 150mM NaCl, 50% Glycerol
Preservative	0.02% Sodium azide
Storage	Store as concentrated solution. Centrifuge briefly prior to opening vial. For short-term storage (1-2 weeks), store at 4°C. For long-term storage, aliquot and store at -20°C or below. Avoid multiple freeze-thaw cycles.
Concentration	Batch dependent (Please refer to the vial label for the specific concentration.)
Immunogen	The antiserum was produced against synthesized peptide derived from human CBP (1501-1550).
Purification	Purified by antigen-affinity chromatography. Non-acetylated peptide was removed by chromatography using corresponding non-acetylated peptide. From serum
Conjugation	Unconjugated
Note	For laboratory use only. Not for any clinical, therapeutic, or diagnostic use in humans or animals. Not for animal or human consumption.



For full product information, images and publications, please visit our [website](#).

DATA IMAGES

**GTX86958 IHC-P Image**

IHC-P analysis of human lung carcinoma tissue using GTX86958 CBP (acetyl Lys1535) antibody. The picture on the right is blocked with the synthesized peptide.



For full product information, images and publications, please visit our [website](#).